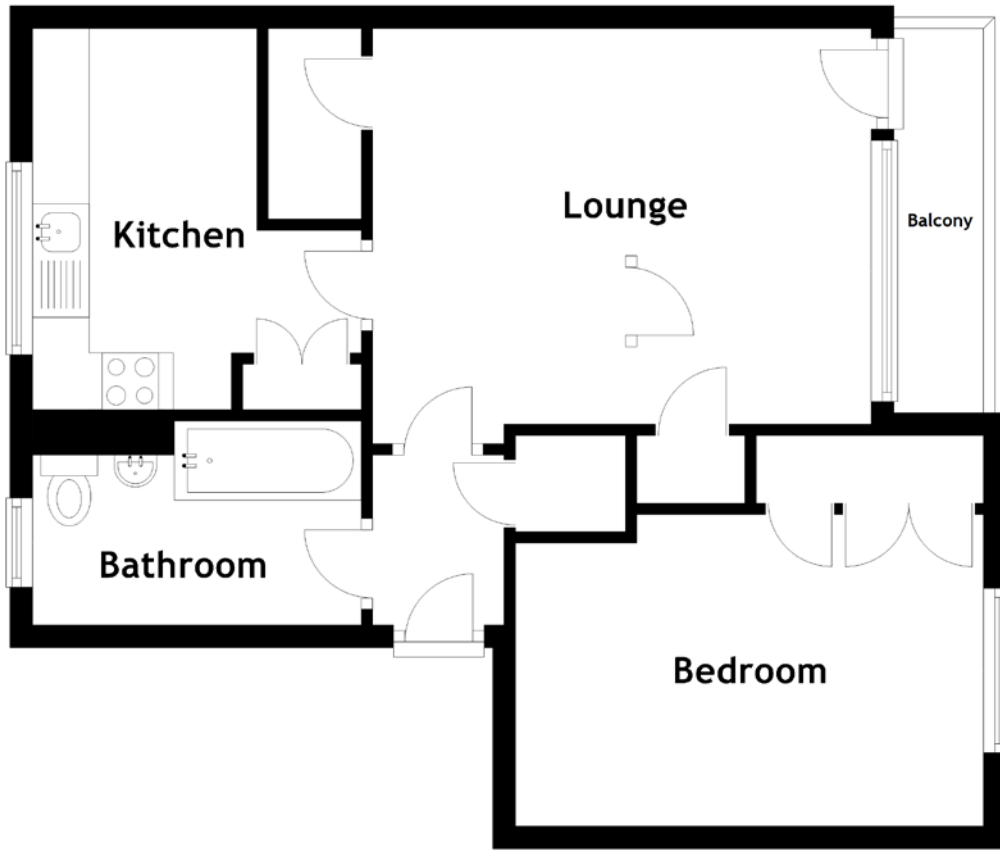


FLOOR PLAN, DIMENSIONS & MAP



Approximate Dimensions
(Taken from the widest point)

Lounge
Kitchen

4.40m (14'5") x 3.66m (12')
3.55m (11'8") x 2.90m (9'6")

Bathroom
Bedroom

2.90m (9'6") x 1.80m (5'11")
4.13m (13'7") x 2.75m (9')

Gross internal floor area (m²): 50m²
EPC Rating: E

