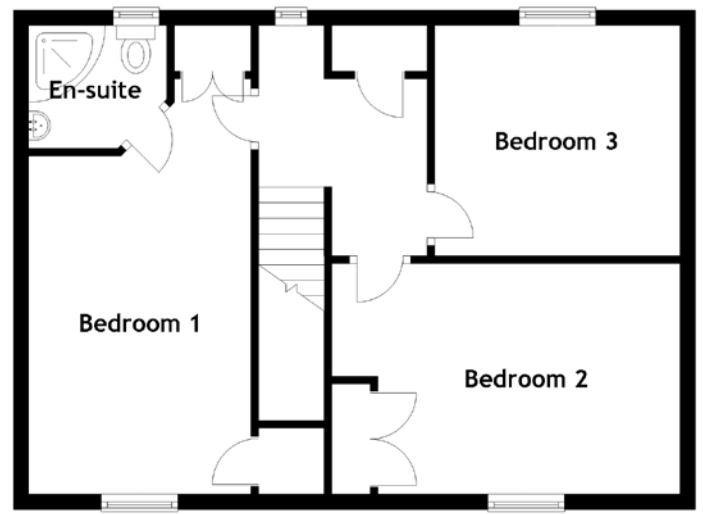
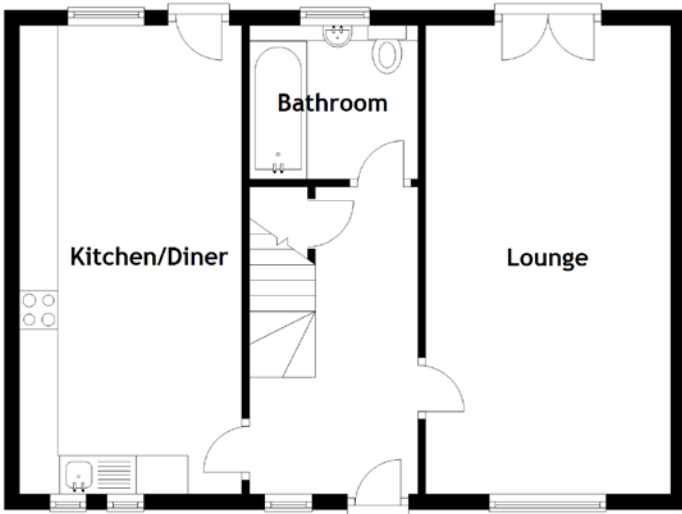


FLOOR PLAN, DIMENSIONS & MAP



Approximate Dimensions (Taken from the widest point)

| | |
|---------------|------------------------------|
| Lounge | 6.10m (20') x 3.20m (10'6") |
| Kitchen/Diner | 6.10m (20') x 2.90m (9'6") |
| Bathroom | 2.20m (7'3") x 2.00m (6'7") |
| Bedroom 1 | 5.40m (17'9") x 2.90m (9'6") |

| | |
|-----------|-------------------------------|
| En-suite | 1.80m (5'11") x 1.60m (5'3") |
| Bedroom 2 | 4.40m (14'5") x 3.00m (9'10") |
| Bedroom 3 | 3.20m (10'6") x 3.00m (9'10") |

Gross internal floor area (m²): 108m²
EPC Rating: C

