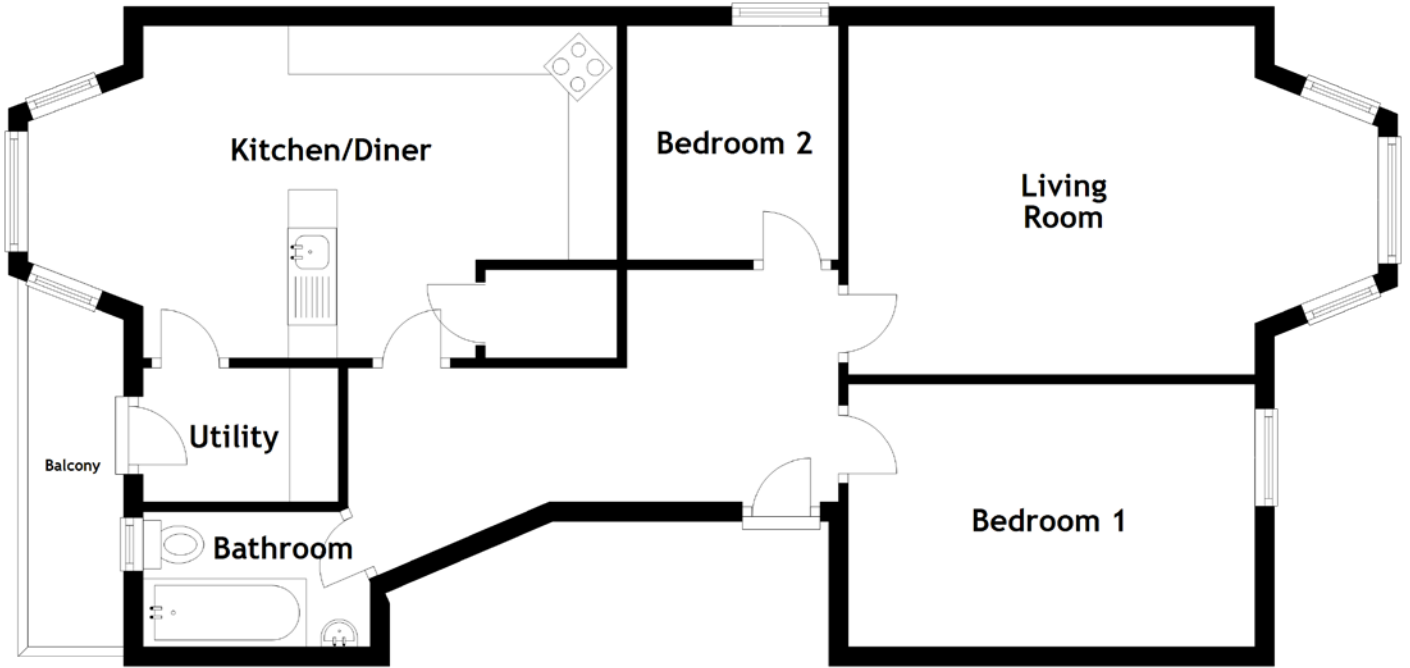


FLOOR PLAN, DIMENSIONS & MAP



Approximate Dimensions
(Taken from the widest point)

Living Room 5.46m (17'11") x 3.59m (11'9")
 Kitchen/Diner 6.07m (19'11") x 3.42m (11'3")
 Utility 1.99m (6'6") x 1.38m (4'6")

Bedroom 1 4.19m (13'9") x 2.75m (9')
 Bedroom 2 2.41m (7'11") x 2.18m (7'2")
 Bathroom 2.34m (7'8") x 1.39m (4'7")

Gross internal floor area (m²): 78m²
 EPC Rating: C

