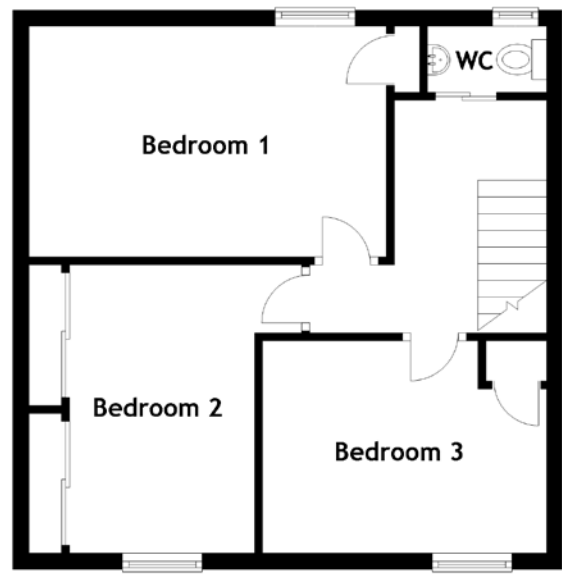
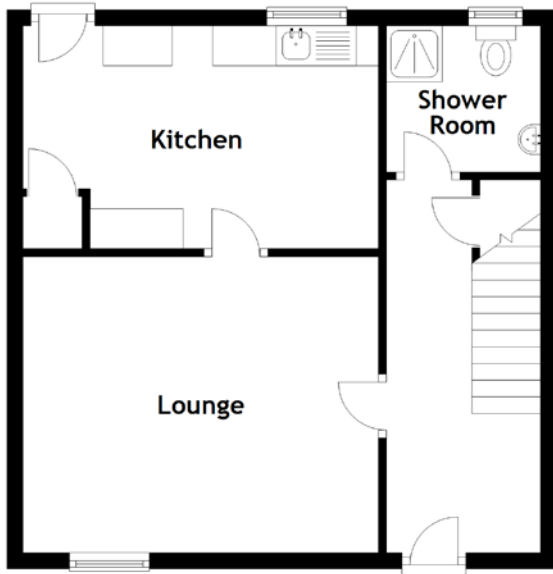


FLOOR PLAN, DIMENSIONS & MAP



Approximate Dimensions
(Taken from the widest point)

Lounge	4.45m (14'7") x 3.71m (12'2")
Kitchen	4.45m (14'7") x 2.79m (9'2")
Shower Room	1.93m (6'4") x 1.83m (6')
WC	1.49m (4'11") x 0.83m (2'9")

Bedroom 1	4.47m (14'8") x 2.89m (9'6")
Bedroom 2	3.61m (11'10") x 2.91m (9'6")
Bedroom 3	3.56m (11'8") x 2.66m (8'9")
Attic	4.87m (16') x 2.40m (7'11")

Gross internal floor area (m²): 87m²
EPC Rating: D

