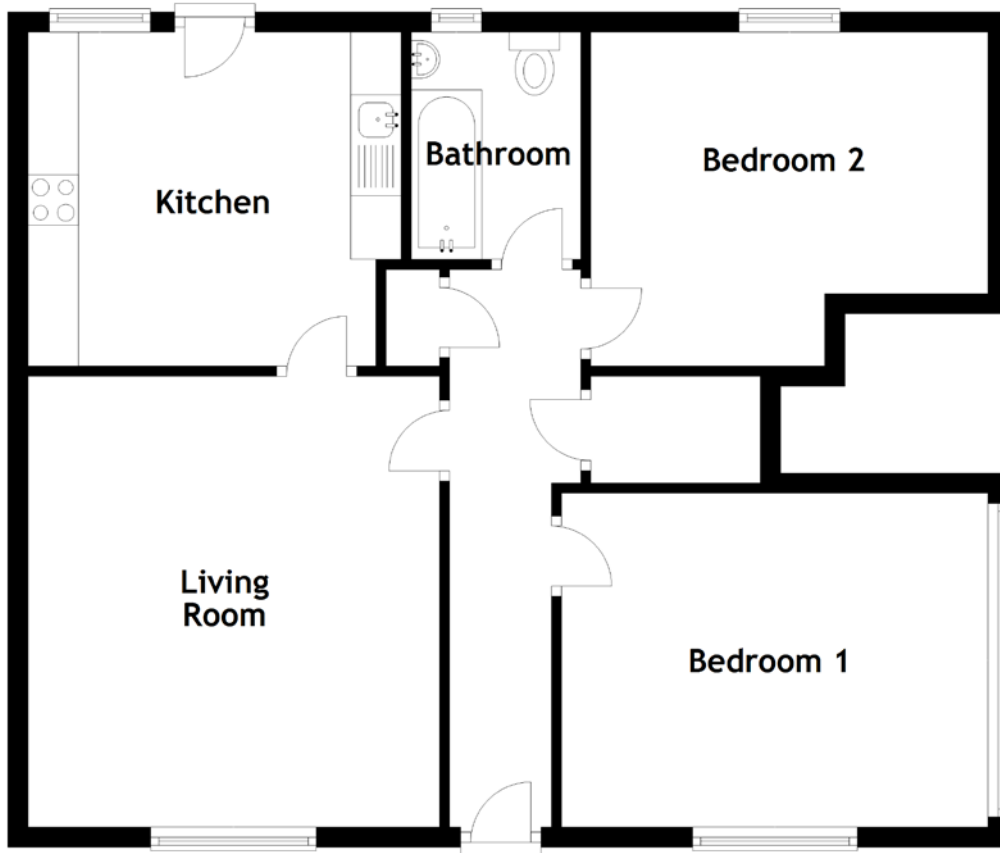


FLOOR PLAN, DIMENSIONS & MAP



Approximate Dimensions (Taken from the widest point)

Living Room 4.47m (14'8") x 4.08m (13'5")
 Kitchen 3.65m (12') x 3.31m (10'10")
 Bathroom 2.25m (7'5") x 1.70m (5'7")

Bedroom 1 4.23m (13'11") x 3.31m (10'10")
 Bedroom 2 3.95m (13') x 3.31m (10'10")

Gross internal floor area (m²): 72m²
 EPC Rating: D

