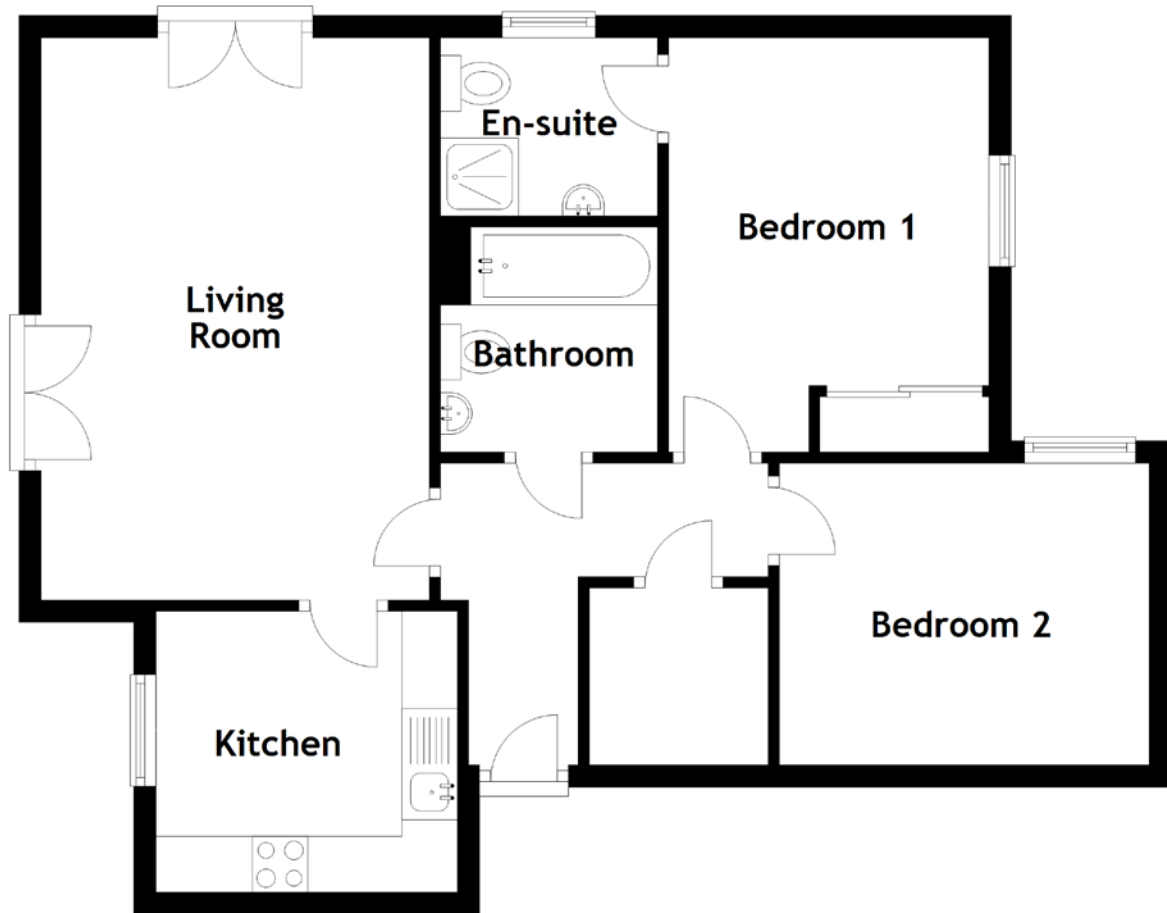


# FLOOR PLAN, DIMENSIONS & MAP



Approximate Dimensions (Taken from the widest point)

Living Room 5.05m (16'7") x 3.49m (11'5")  
 Kitchen 2.71m (8'11") x 2.52m (8'3")  
 Bathroom 2.02m (6'8") x 1.95m (6'5")

Bedroom 1 3.72m (12'2") x 2.88m (9'5")  
 En-suite 1.95m (6'5") x 1.60m (5'3")  
 Bedroom 2 3.33m (10'11") x 2.71m (8'11")

Gross internal floor area (m<sup>2</sup>): 65m<sup>2</sup> | EPC Rating: B

