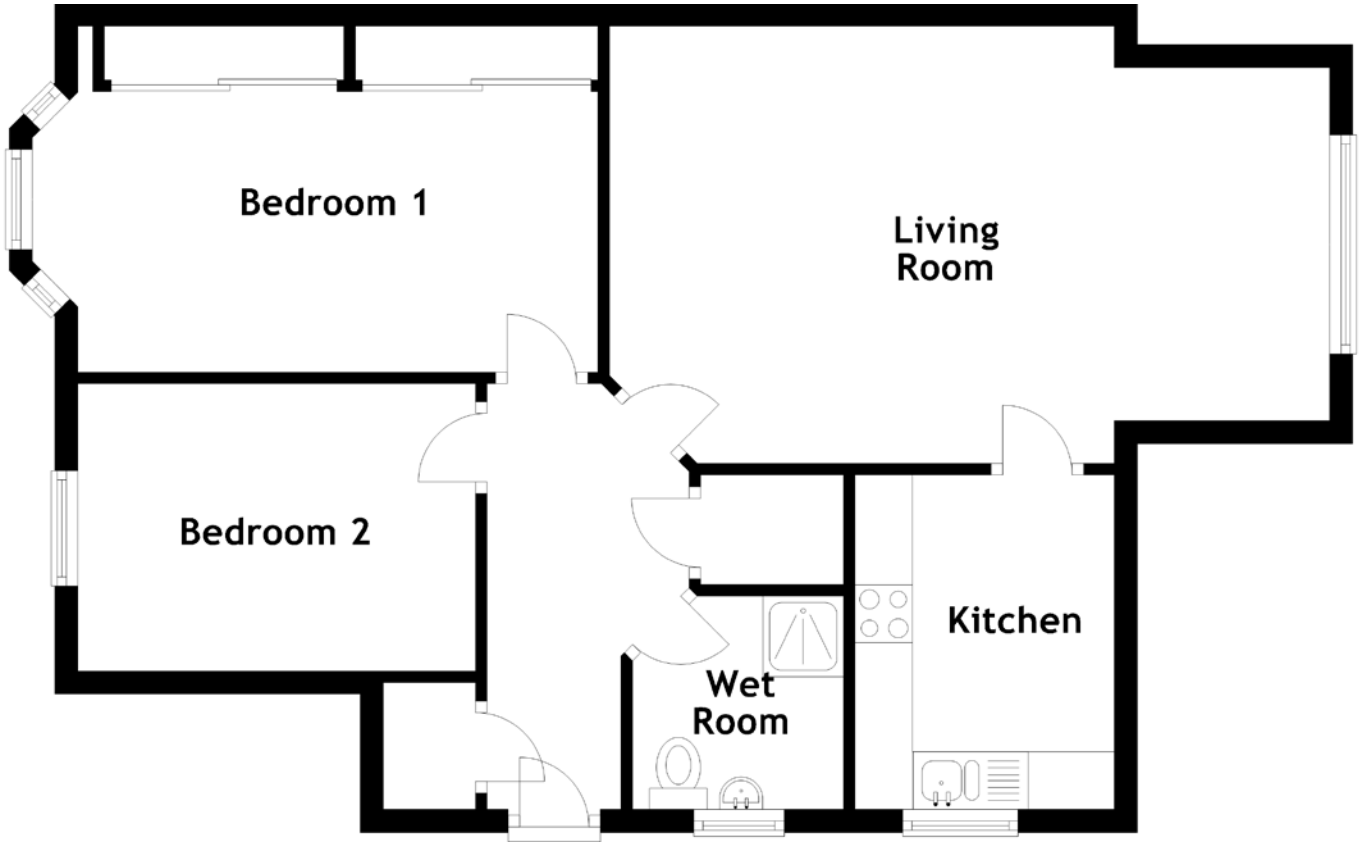


# FLOOR PLAN, DIMENSIONS & MAP



Approximate Dimensions (Taken from the widest point)

Living Room 6.25m (20'6") x 3.79m (12'5")  
 Kitchen 2.90m (9'6") x 2.25m (7'5")  
 Wet Room 1.85m (6'1") x 1.83m (6')

Bedroom 1 4.51m (14'10") x 3.00m (9'10")  
 Bedroom 2 3.45m (11'4") x 2.49m (8'2")

Gross internal floor area (m<sup>2</sup>): 64m<sup>2</sup>  
 EPC Rating: E

