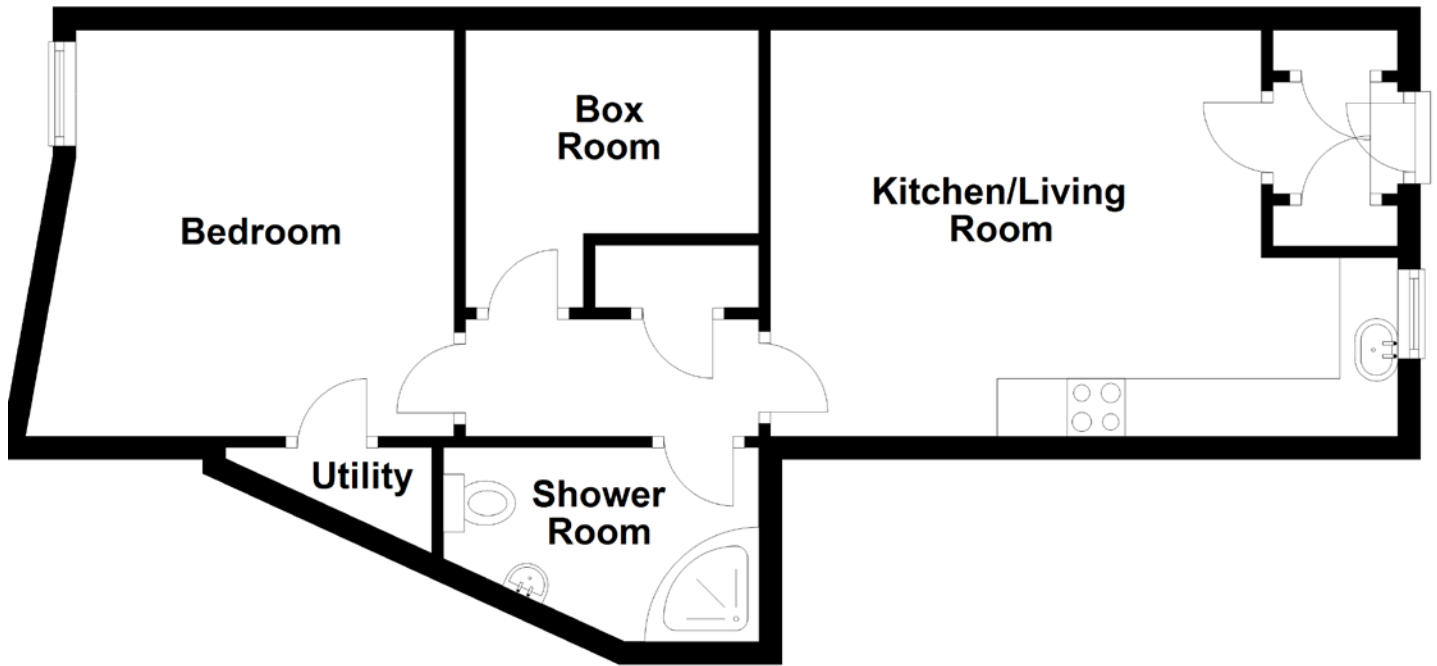


FLOOR PLAN, DIMENSIONS & MAP



Approximate Dimensions (Taken from the widest point)

Kitchen/Living Room 4.25m (13'11") x 3.51m (11'6")
 Shower Room 2.73m (9') x 1.67m (5'6")
 Bedroom 3.72m (12'2") x 3.51m (11'6")

Utility 1.79m (5'10") x 0.85m (2'10")
 Box Room 2.54m (8'4") x 2.40m (7'10")

Gross internal floor area (m²): 45.5m²
 EPC Rating: C

