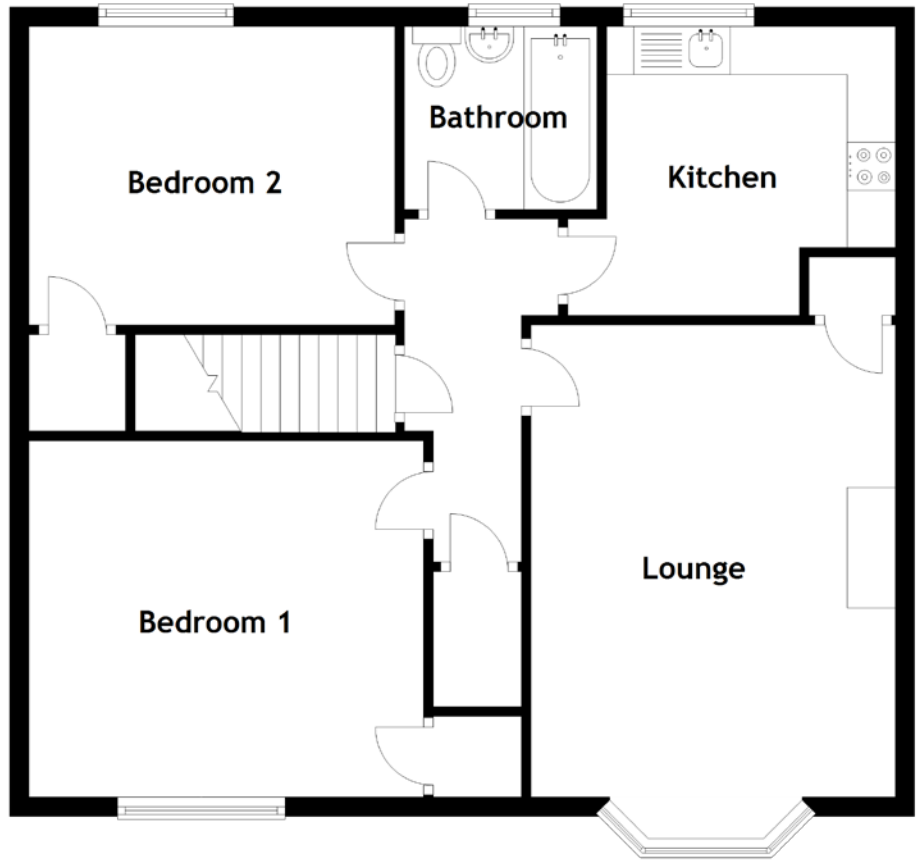
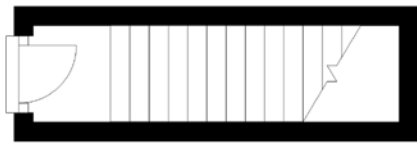


FLOOR PLAN, DIMENSIONS & MAP



Approximate Dimensions
(Taken from the widest point)

Lounge 4.90m (16'1") x 3.70m (12'2")
Kitchen 3.00m (9'10") x 3.00m (9'10")

Bedroom 1 4.10m (13'5") x 3.70m (12'2")
Bedroom 2 3.80m (12'6") x 3.10m (10'2")
Bathroom 2.00m (6'7") x 1.90m (6'3")

Gross internal floor area (m²): 74m² | EPC Rating: D

