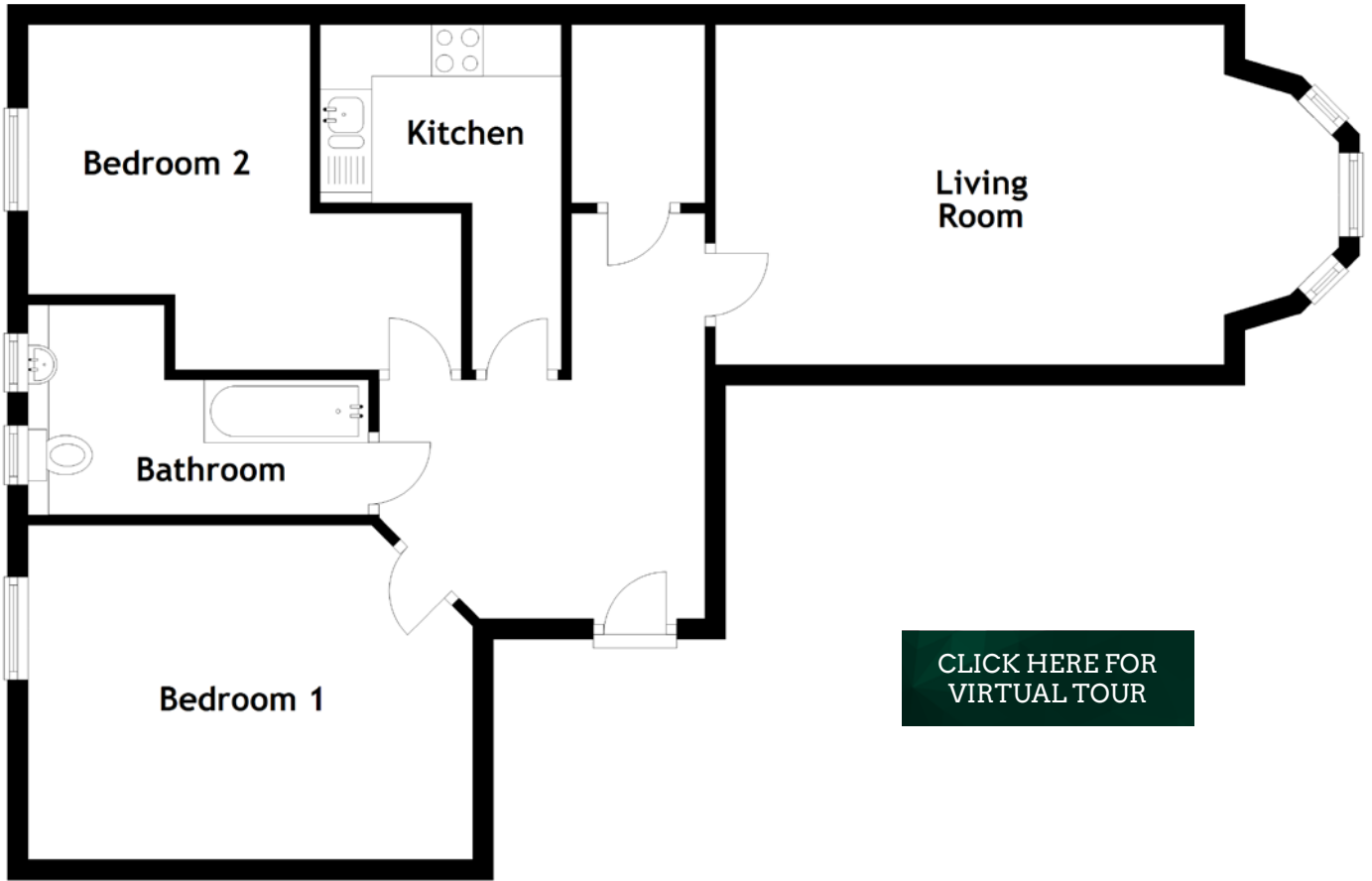


# FLOOR PLAN, DIMENSIONS & MAP



[CLICK HERE FOR VIRTUAL TOUR](#)

Approximate Dimensions (Taken from the widest point)

Living Room                    6.06m (19'11") x 3.30m (10'10")  
 Kitchen                        3.35m (11') x 2.34m (7'8")  
 Bedroom 1                    4.32m (14'2") x 3.25m (10'8")

Bedroom 2                    4.06m (13'4") x 3.35m (11')  
 Bathroom                    3.31m (10'10") x 2.04m (6'8")

Gross internal floor area (m<sup>2</sup>): 63m<sup>2</sup>  
 EPC Rating: C

