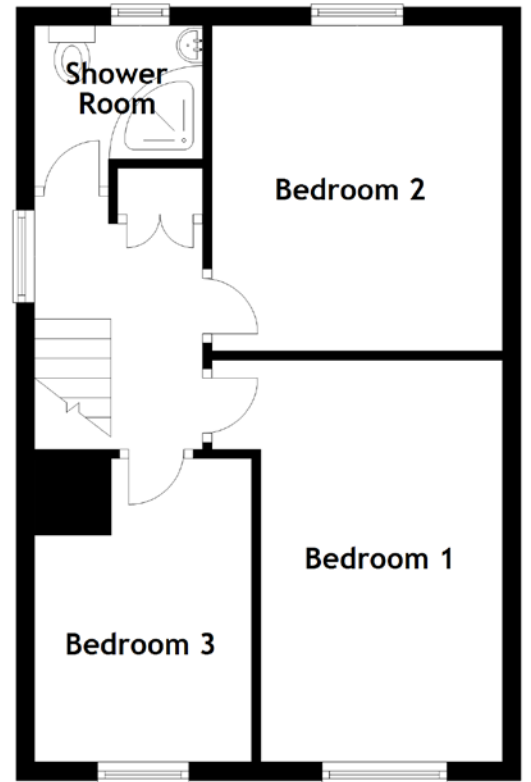
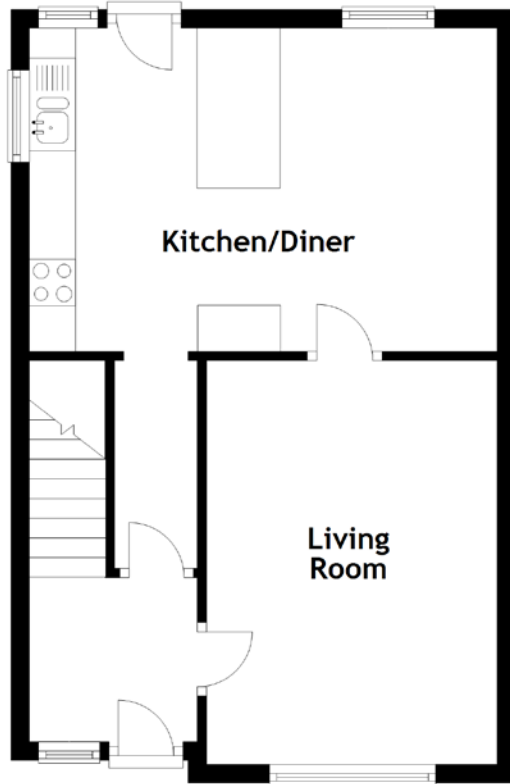
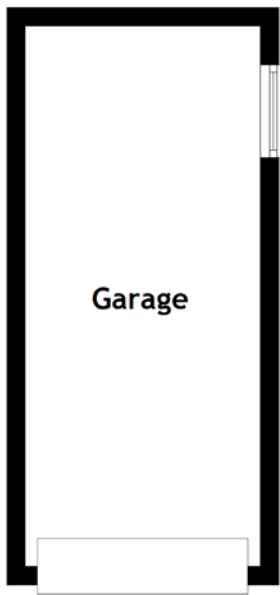


FLOOR PLAN, DIMENSIONS & MAP



[CLICK HERE FOR VIRTUAL TOUR](#)

Approximate Dimensions
(Taken from the widest point)

Living Room 4.37m (14'4") x 3.15m (10'4")
 Kitchen/Diner 5.07m (16'8") x 3.50m (11'6")
 Shower Room 1.91m (6'3") x 1.75m (5'9")

Bedroom 1 4.22m (13'10") x 3.08m (10'1")
 Bedroom 2 3.52m (11'7") x 3.08m (10'1")
 Bedroom 3 3.28m (10'9") x 2.35m (7'9")
 Garage 5.85m (19'2") x 2.55m (8'4")

Gross internal floor area (m²): 79m² | EPC Rating: D

