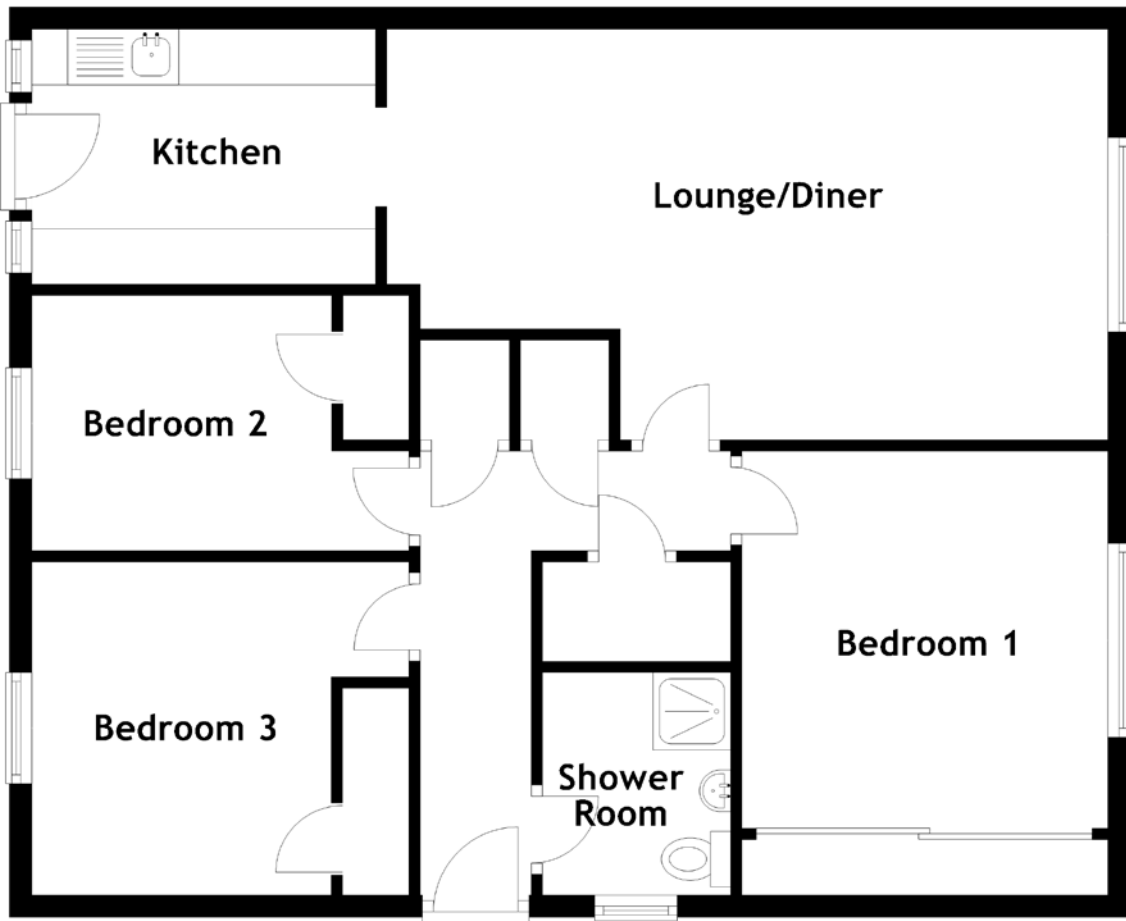


# FLOOR PLAN, DIMENSIONS & MAP



Approximate Dimensions  
(Taken from the widest point)

Lounge/Diner 6.50m (21'4") x 3.70m (12'2")  
 Kitchen 3.10m (10'2") x 2.30m (7'6")  
 Shower Room 2.00m (6'7") x 1.70m (5'7")

Bedroom 1 3.40m (11'2") x 3.30m (10'10")  
 Bedroom 2 3.40m (11'2") x 2.30m (7'7")  
 Bedroom 3 3.40m (11'2") x 3.00m (9'10")

Gross internal floor area (m<sup>2</sup>): 74m<sup>2</sup>  
 EPC Rating: C

