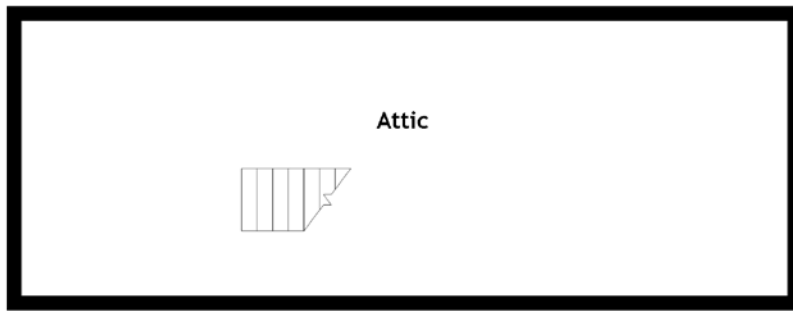
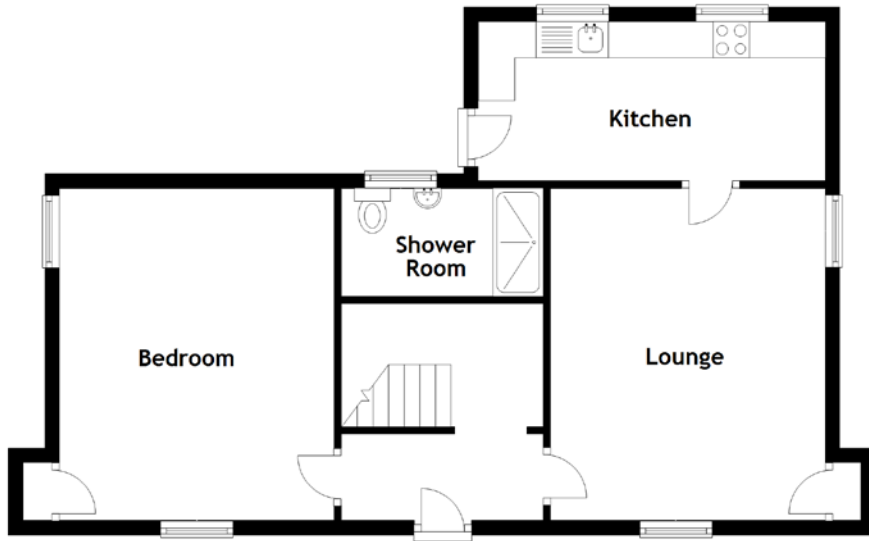


FLOOR PLAN, DIMENSIONS & MAP



Approximate Dimensions (Taken from the widest point)

Kitchen 4.80m (15'9") x 2.20m (7'3")
Lounge 4.60m (15'1") x 3.80m (12'6")
Shower Room 2.80m (9'2") x 1.50m (4'11")

Bedroom 4.60m (15'1") x 3.80m (12'5")
Attic 10.70m (35'1") x 3.80m (12'6")

Gross internal floor area (m²): 57m²
EPC Rating: F

