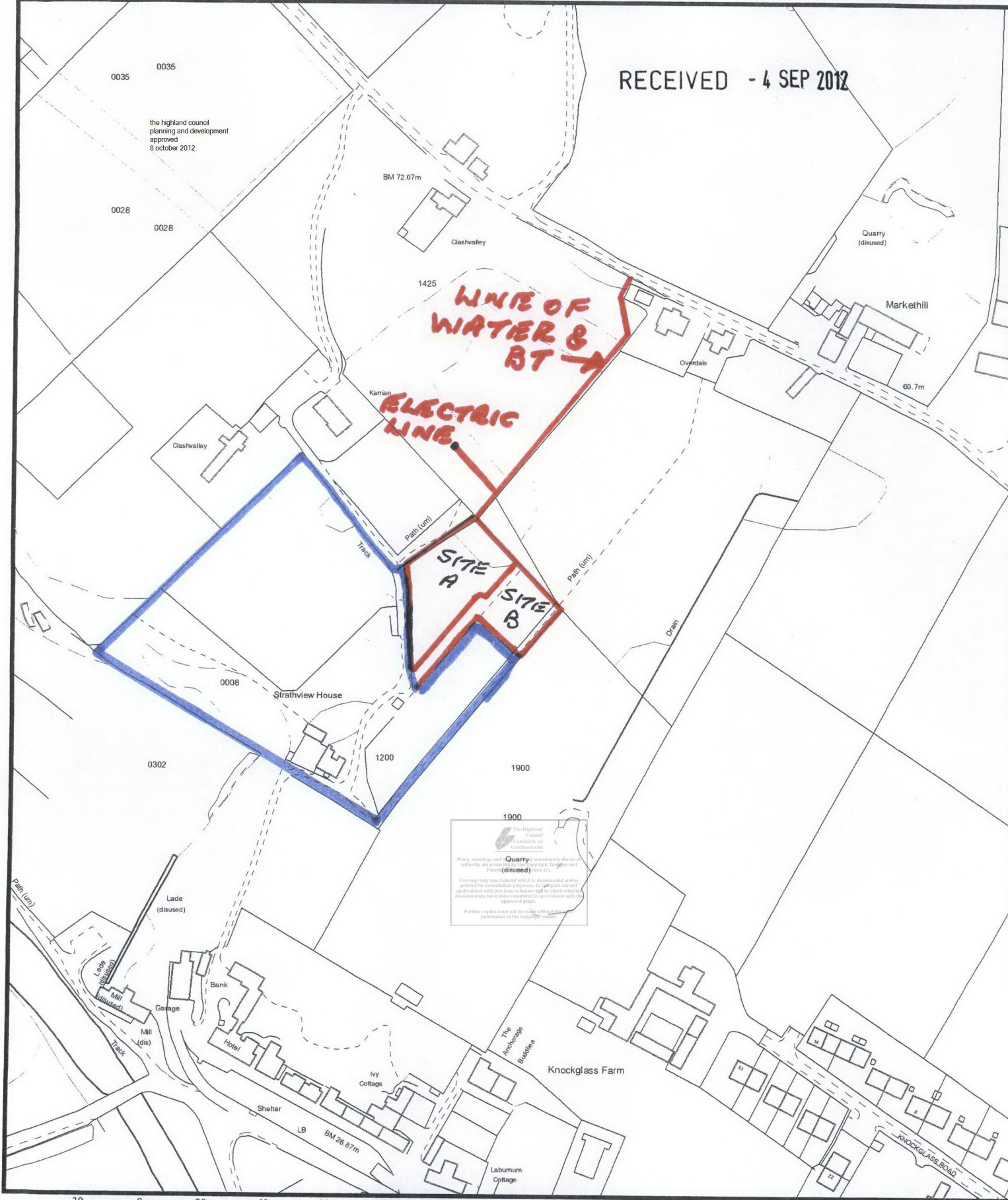


RECEIVED - 4 SEP 2012

the highland council
planning and development
approved
8 october 2012

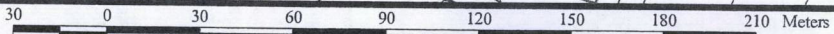


The Highland Council
Comhairle na Gàidhealtachd

Plans, drawings and other material submitted to the local authority are protected by copyright. Design and Patent (disused)

You may only use material which is downloaded and/or printed for consultation purposes. It is your current responsibility with previous versions apply to check whether developments have been completed in accordance with the approved plans.

Further copies must not be made without the permission of the copyright owner.



ENTER A MAIN TITLE HERE

Enter a sub-title here



Date

SUPPLIED BY THE HIGHLAND COUNCIL PLANNING & DEVELOPMENT SERVICE

Reproduced from the Ordnance Survey mapping with the permission of the controller of Her Majesty's Stationary Office © Crown Copyright. Unauthorised reproduction infringes Crown Copyright and may lead to prosecution or civil proceedings. The Highland Council LA09036L

RECEIVED - 4 SEP 2012

0008

Strathview House

1200

1900

1900

X PBRC TEST.

WASTE STORAGE POINT

xxx +

SITE A

SITE B

FENCE

1/4" SHARDED ACCESS

Track
Path (um)

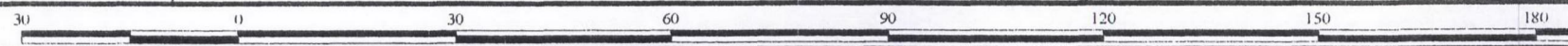
Path (um)

Drain

26750

357

The Highland Council
Cumhairle na Gàidhealtachd
Plans, drawings and other material submitted to the local authority are protected by the Copyright, Design and Patents Act 1988 (Section 41).
You may only use material which is downloaded and/or printed for consultation purposes. In complete current applications with previous schemes and to check whether developments have been completed in accordance with the approved plans.
Further copies may not be made without the prior permission of the copyright owner.



ENTER A MAIN TITLE HERE

Enter a sub-title here

SUPPLIED BY THE HIGHLAND COUNCIL PLANNING & DEVELOPMENT SERVICE

Reproduced from the Ordnance Survey mapping with the permission of the controller of Her Majesty's Stationary Office © Crown Copyright. Unauthorised reproduction infringes Crown Copyright and may lead to prosecution or civil proceedings. The Highland Council LA09036L.