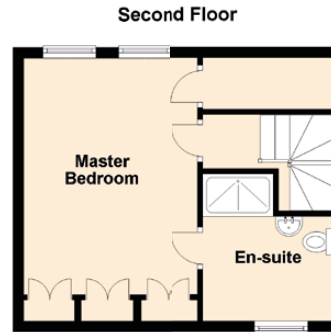
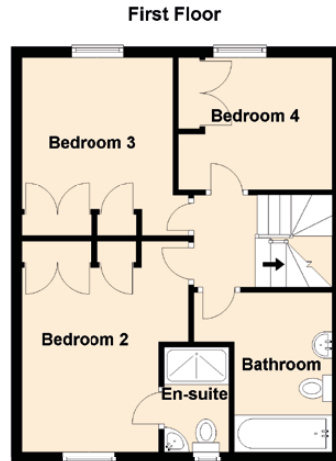
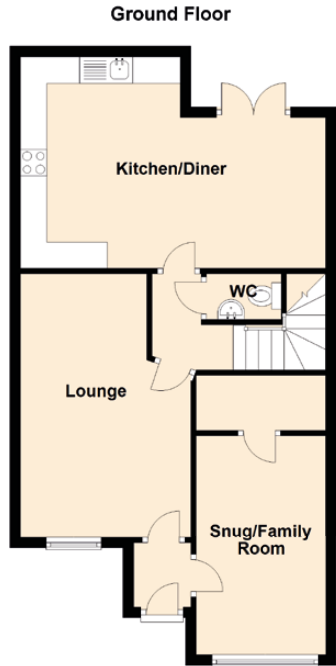


# 7 Lamrash Gardens

KILMARNOCK, EAST AYRSHIRE, KA3 1AB



Approximate Dimensions (Taken from the widest point)

## Ground Floor

Lounge	4.97m (16'4") x 3.21m (10'6")
Kitchen/Diner	5.75m (18'10") x 3.98m (13'1")
Snug/Family Room	4.12m (13'6") x 2.53m (8'4")
WC	1.41m (4'8") x 0.86m (2'10")

## First Floor

Bedroom 2	3.98m (13'1") x 3.15m (10'4")
En-suite	2.08m (6'10") x 1.22m (4')
Bedroom 3	3.35m (11') x 2.87m (9'5")
Bedroom 4	2.93m (9'7") x 2.49m (8'2")
Bathroom	3.01m (9'11") x 1.84m (6')

## Second Floor

Master Bedroom	4.48m (14'8") x 3.29m (10'10")
En-suite	2.77m (9'1") x 2.50m (8'2")