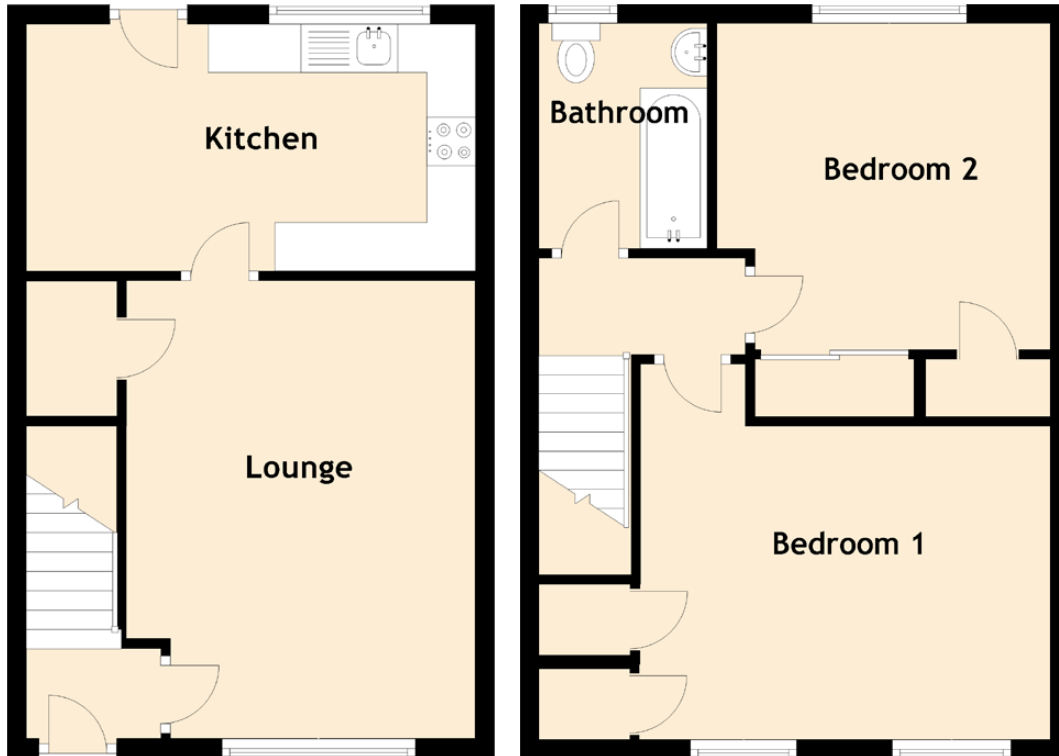


132 Wester Drylaw Drive

EDINBURGH, EH4 2TB



Approximate Dimensions (Taken from the widest point)

Lounge	4.73m (15'6") x 3.60m (11'10")
Kitchen	4.63m (15'2") x 2.55m (8'4")
Bedroom 1	4.23m (13'10") x 3.93m (12'11")
Bedroom 2	3.53m (11'7") x 3.49m (11'5")
Bathroom	2.36m (7'9") x 1.76m (5'9")

Gross internal floor area (m²): 75m² | EPC Rating: C