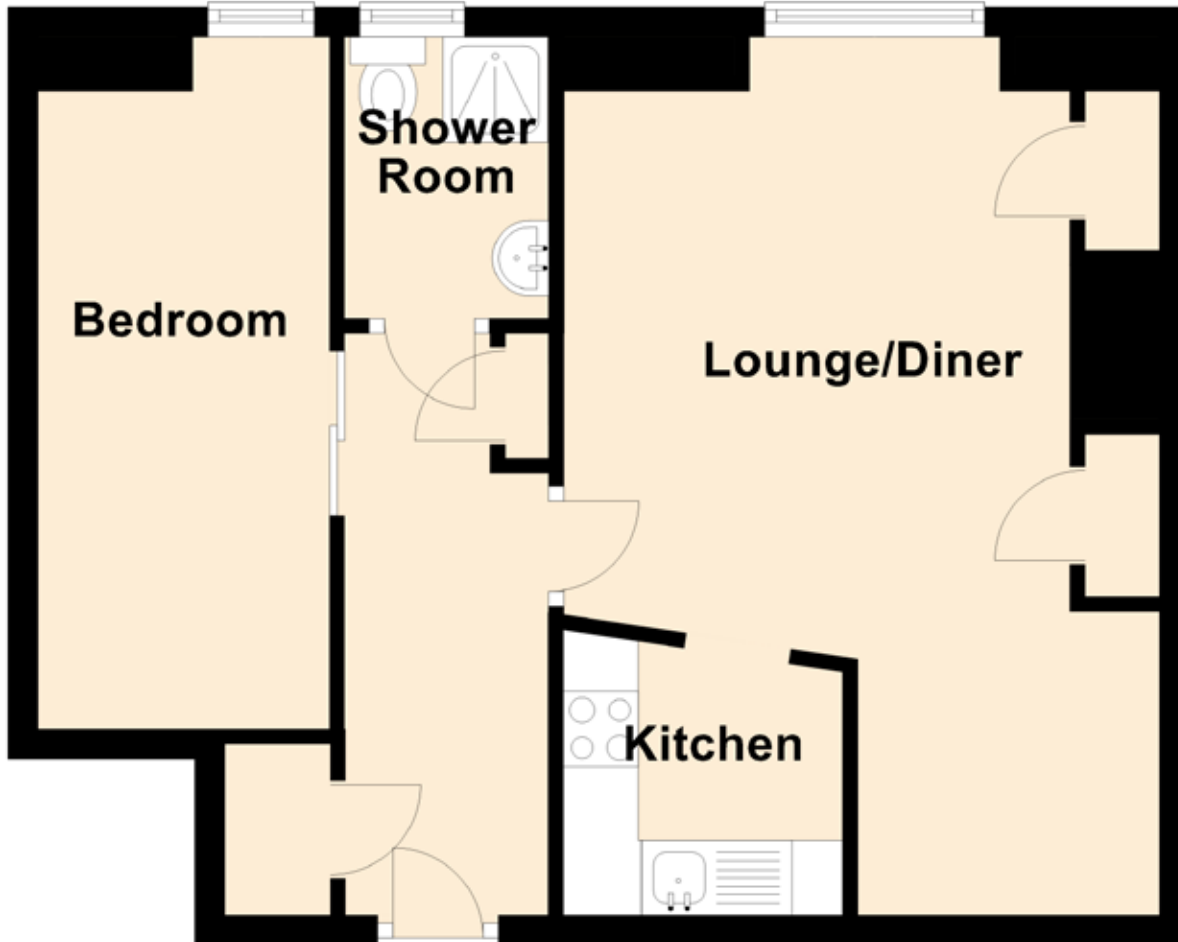


15/3 Westfield Road

EDINBURGH, EH11 2QS



Approximate Dimensions

(Taken from the widest point)

Lounge/Diner	5.48m (18') x 3.96m (13')
Kitchen	2.00m (6'7") x 1.96m (6'5")
Bedroom	4.60m (15'1") x 1.94m (6'4")
Shower Room	1.87m (6'2") x 1.36m (4'6")

Gross internal floor area (m²): 41m²

EPC Rating: C