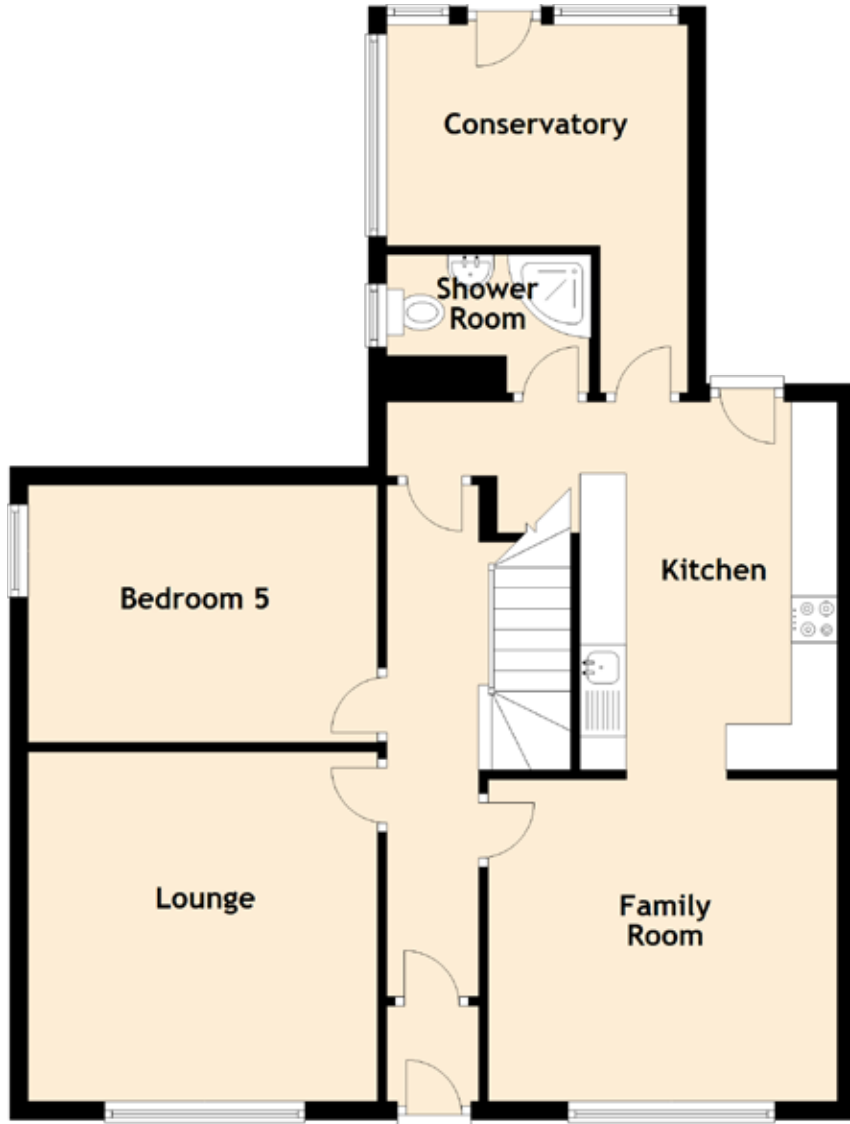


11 Craigo Terrace



Approximate Dimensions
(Taken from the widest point)

Lounge	3.80m (12'6") x 3.80m (12'6")
Family Room	3.80m (12'6") x 3.50m (11'6")
Kitchen	3.80m (12'6") x 3.10m (10'2")
Conservatory	3.90m (12'10") x 3.60m (11'10")
Bedroom 1	3.60m (11'10") x 3.30m (10'10")
Bedroom 2	3.80m (12'6") x 3.00m (9'10")
Bedroom 3	3.60m (11'10") x 3.20m (10'6")
Bedroom 4/Study	2.50m (8'2") x 2.30m (7'7")
Bedroom 5	3.80m (12'6") x 2.80m (9'2")
Bathroom	2.90m (9'6") x 2.90m (9'6")
Shower Room	2.30m (7'7") x 1.50m (4'11")

Gross internal floor area (m²): 114m²

EPC Rating: E

