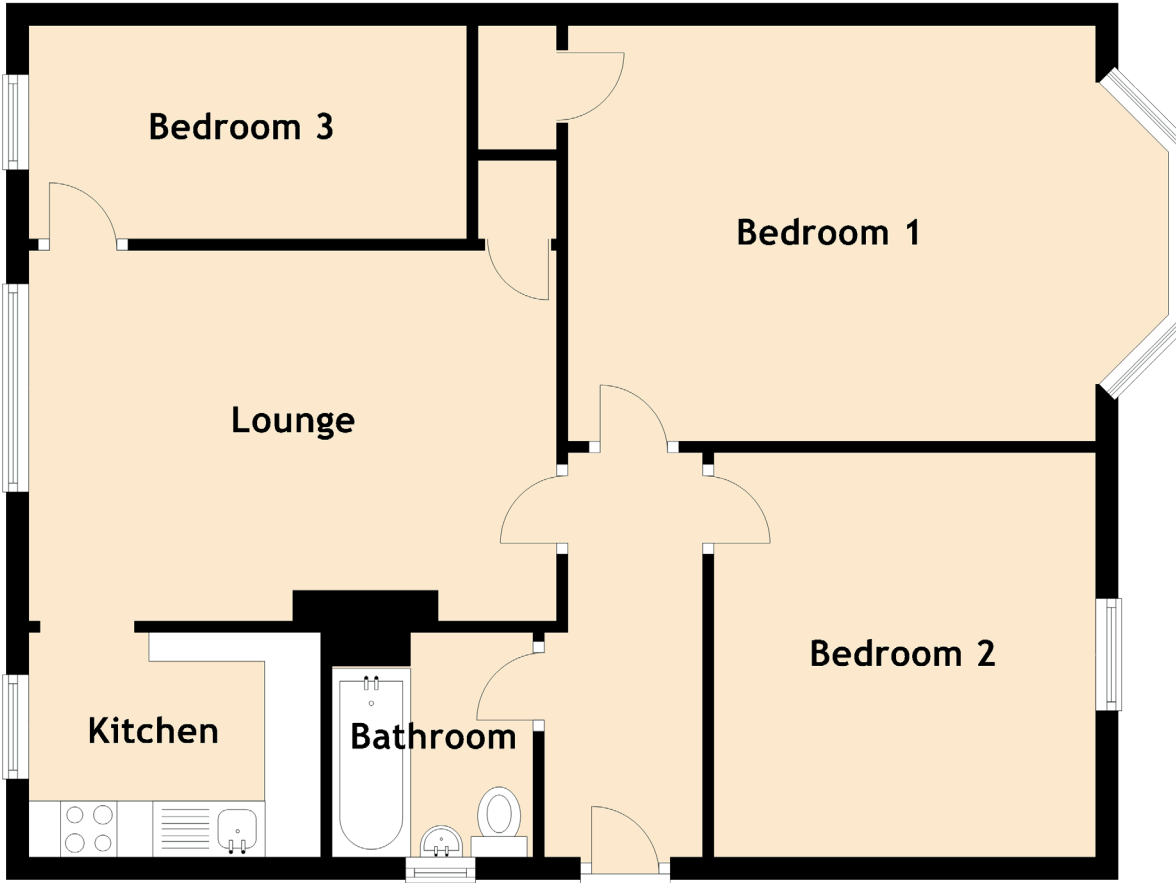


SPECIFICATIONS & DETAILS

FLOOR PLAN, DIMENSIONS & MAP



Approximate Dimensions
(Taken from the widest point)

Kitchen	2.60m (8'6") x 2.00m (6'7")
Lounge	4.70m (15'5") x 3.30m (10'10")
Bedroom 3	3.90m (12'10") x 1.90m (6'3")
Bedroom 1	4.70m (15'5") x 3.70m (12'2")
Bedroom 2	3.40m (11'2") x 3.40m (11'2")
Bathroom	2.00m (6'7") x 1.90m (6'3")

Gross internal floor area (m²): 75m²

EPC Rating: D

