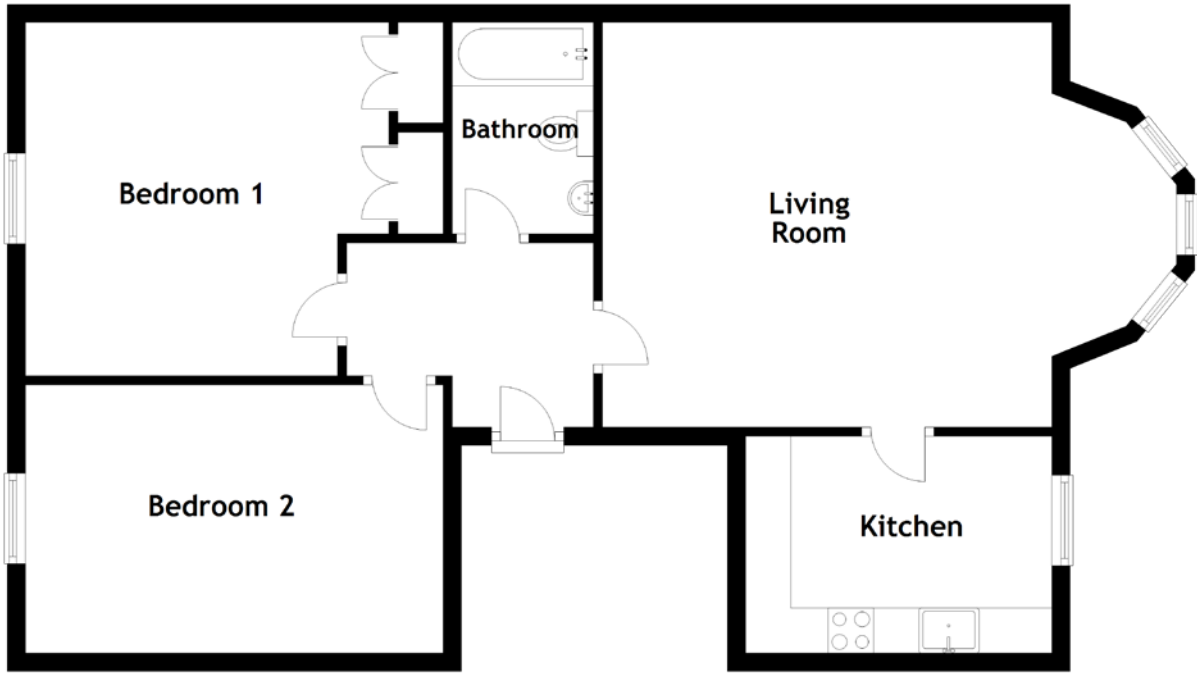


FLOOR PLAN, DIMENSIONS & MAP



Approximate Dimensions (Taken from the widest point)

Living Room 6.07m (19'11") x 4.48m (14'8")
Kitchen 3.39m (11'1") x 2.40m (7'10")
Bedroom 1 4.62m (15'2") x 3.91m (12'10")

Bedroom 2 4.62m (15'2") x 3.00m (9'10")
Bathroom 2.34m (7'8") x 1.59m (5'3")

Gross internal floor area (m²): 77m²
EPC Rating: C

