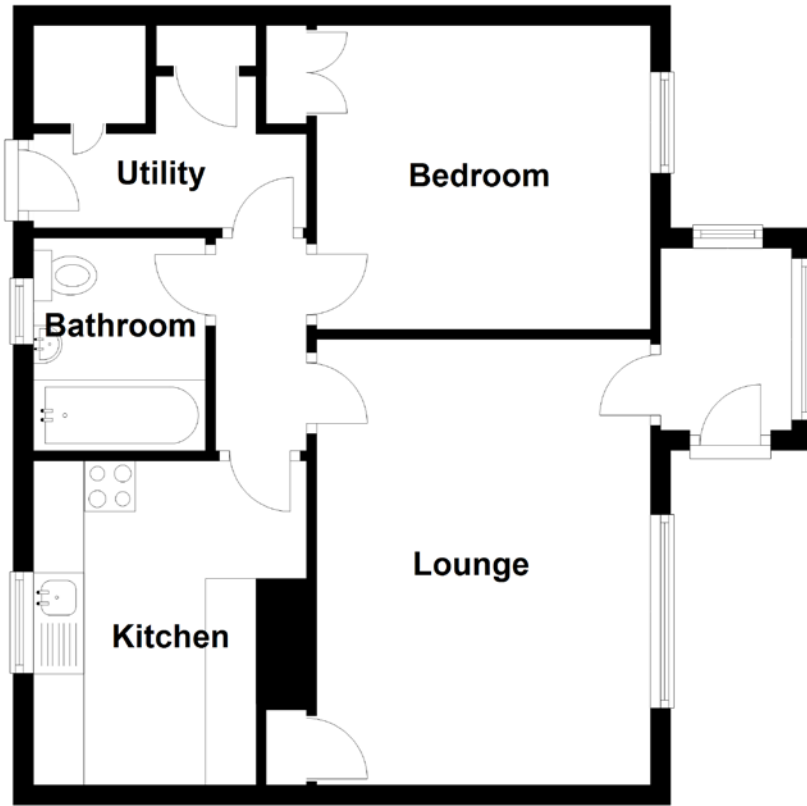


FLOOR PLAN, DIMENSIONS & MAP



Approximate Dimensions
(Taken from the widest point)

Lounge	4.40m (14'5") x 3.30m (10'10")
Kitchen	3.20m (10'6") x 2.60m (8'6")
Utility	2.70m (8'10") x 2.00m (6'7")
Bedroom	3.30m (10'10") x 3.00m (9'10")

Bathroom 2.10m (6'11") x 1.70m (5'7")

Gross internal floor area (m²): 47m²

EPC Rating: E

Extras (Included in the sale): Floor coverings and light fittings.

