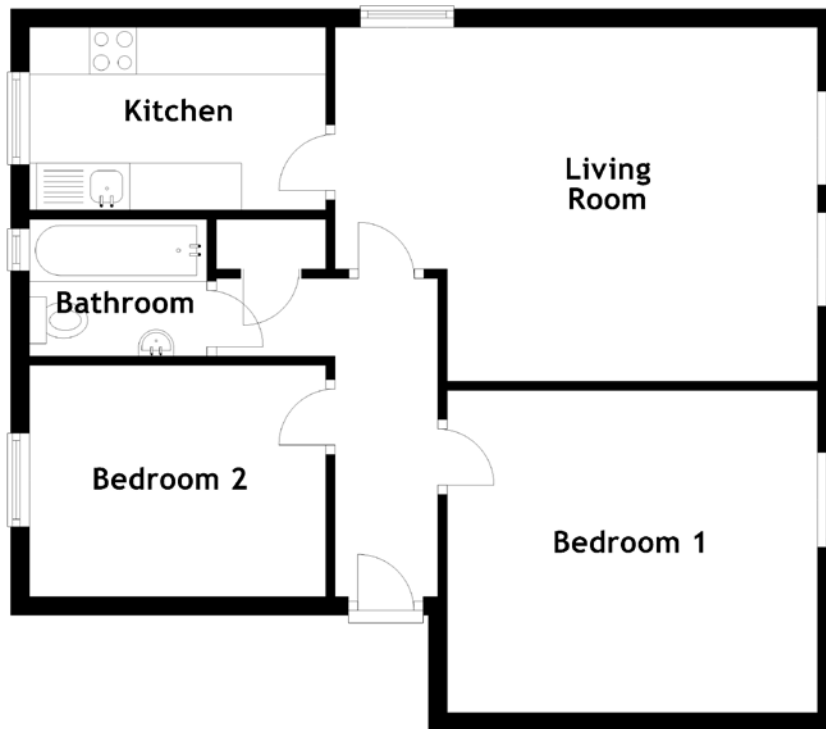


FLOOR PLAN, DIMENSIONS & MAP



Approximate Dimensions (Taken from the widest point)

Living Room 5.16m (16'11") x 3.78m (12'5")
Kitchen 3.17m (10'5") x 1.95m (6'5")
Bedroom 1 3.96m (13') x 3.44m (11'3")

Bedroom 2 3.19m (10'6") x 2.47m (8'1")
Bathroom 1.90m (6'3") x 1.46m (4'9")

Gross internal floor area (m²): 57m²
EPC Rating: D

