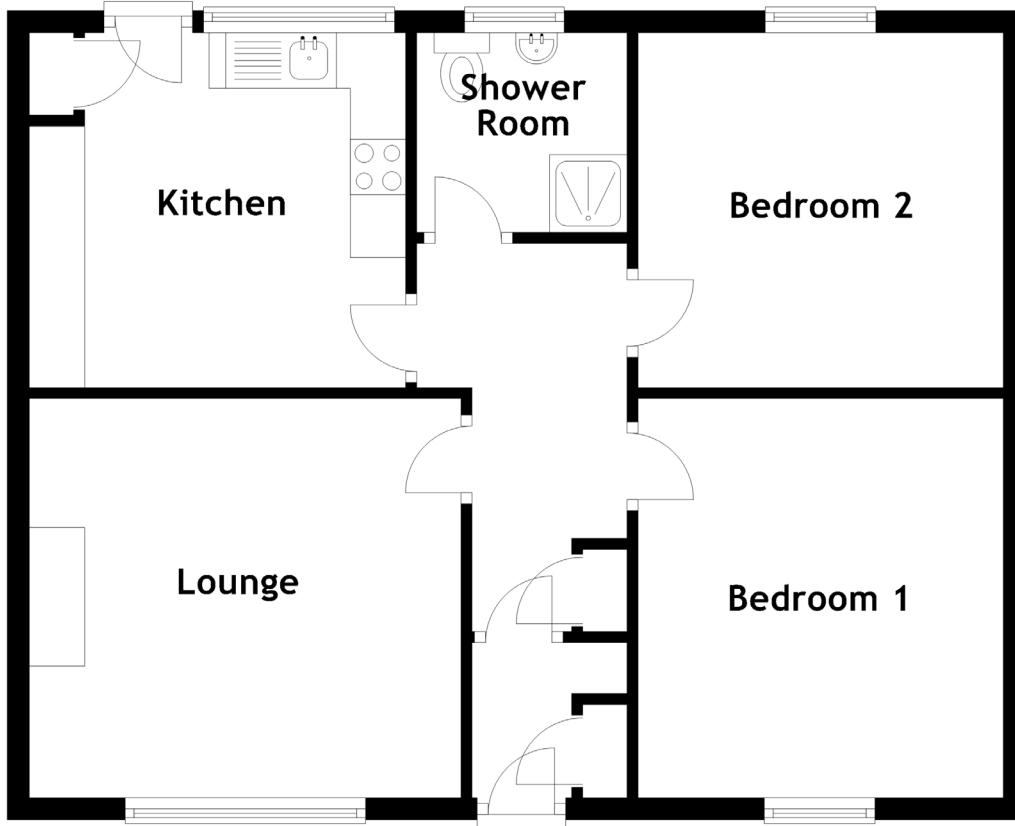


124 Airyhall Drive

ABERDEEN, AB15 7QR



Approximate Dimensions
(Taken from the widest point)

Lounge	3.90m (12'10") x 3.60m (11'10")
Kitchen	3.40m (11'2") x 3.20m (10'6")
Bedroom 1	3.60m (11'10") x 3.30m (10'10")
Bedroom 2	3.30m (10'10") x 3.20m (10'6")
Shower Room	1.90m (6'3") x 1.80m (5'11")

Gross internal floor area (m²): 62m²

EPC Rating: D