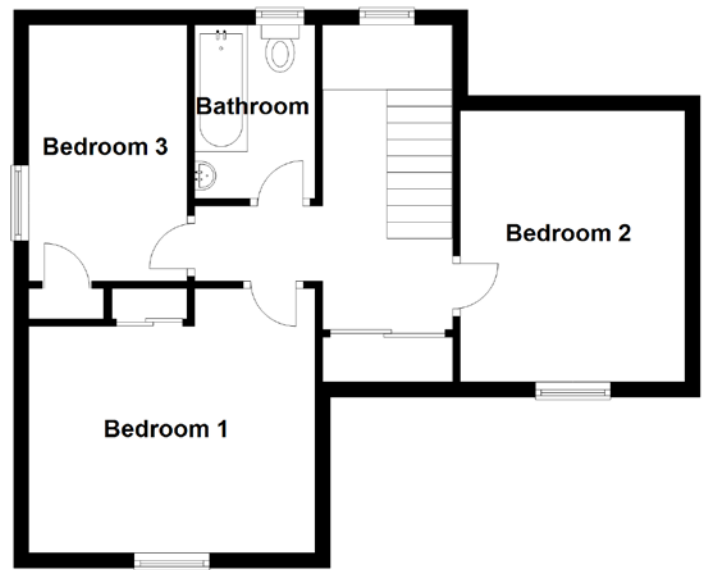
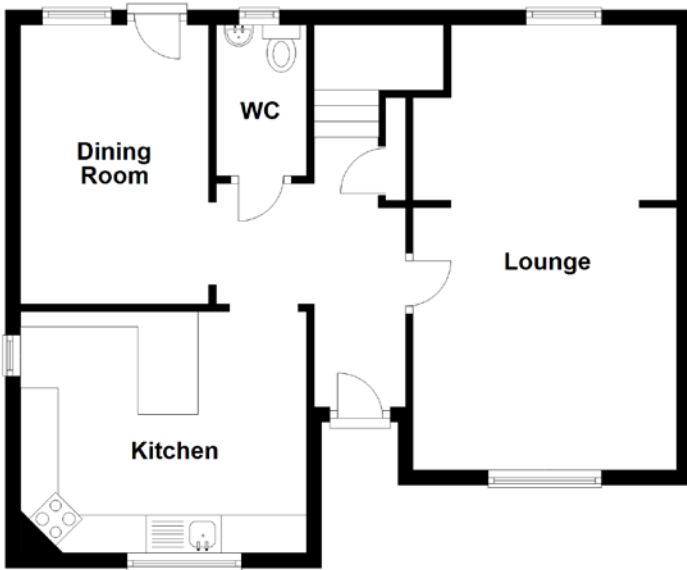


FLOOR PLAN, DIMENSIONS & MAP



Approximate Dimensions (Taken from the widest point)

Lounge	5.90m (19'4") x 3.50m (11'6")
Dining Room	3.70m (12'2") x 2.50m (8'2")
Kitchen	3.80m (12'6") x 3.20m (10'6")
WC	2.00m (6'7") x 1.20m (3'11")
Bedroom 1	3.80m (12'6") x 3.50m (11'6")

Bedroom 2	3.60m (11'10") x 2.98m (9'9")
Bedroom 3	3.40m (11'2") x 2.10m (6'11")
Bathroom	2.30m (7'7") x 1.60m (5'3")

Gross internal floor area (m²): 103m²

EPC Rating: C

