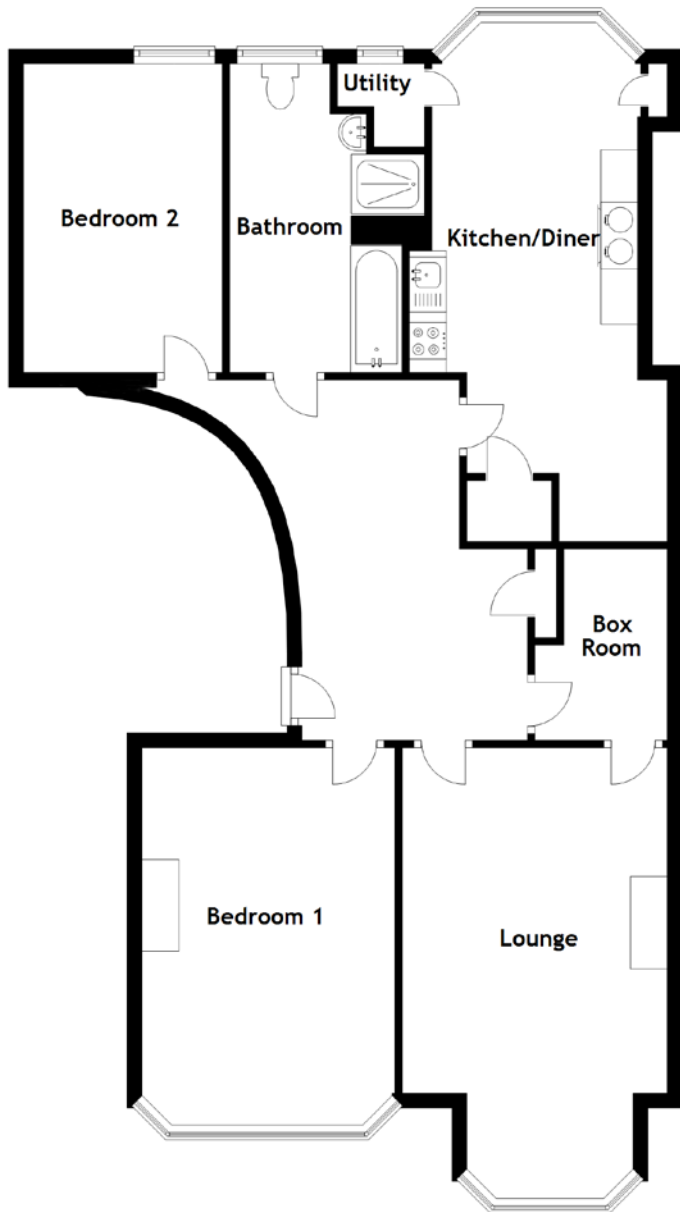


# FLOOR PLAN, DIMENSIONS & MAP



Approximate Dimensions  
(Taken from the widest point)

Lounge	6.13m (20'1") x 3.60m (11'10")
Kitchen/Diner	6.60m (21'8") x 3.50m (11'6")
Utility	1.30m (4'3") x 1.20m (3'11")
Bedroom 1	5.13m (16'10") x 3.40m (11'2")
Bedroom 2	4.30m (14'1") x 2.70m (8'10")
Box Room	2.60m (8'6") x 1.80m (5'11")
Bathroom	4.20m (13'9") x 1.40m (4'7")

Gross internal floor area (m<sup>2</sup>): 94m<sup>2</sup>

EPC Rating: E

