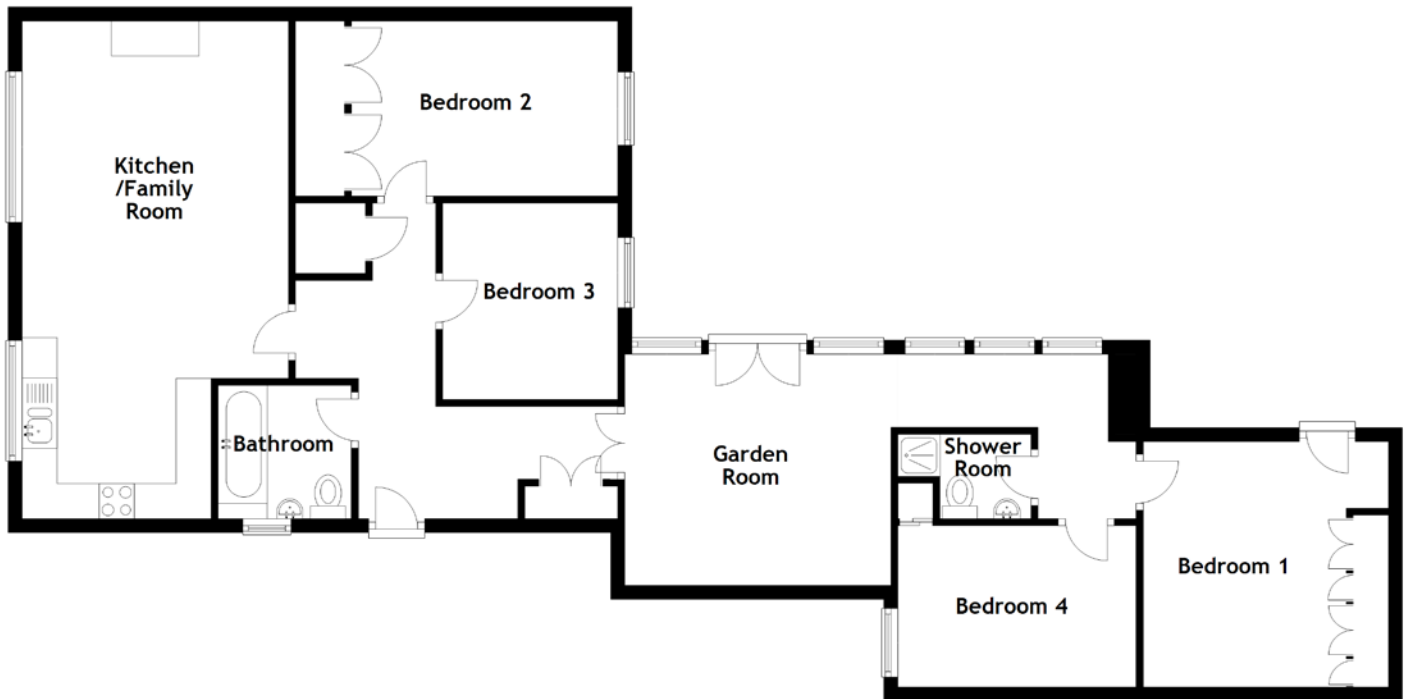


FLOOR PLAN, DIMENSIONS & MAP



Approximate Dimensions
(Taken from the widest point)

Kitchen/Family Room 7.10m (23'4") x 3.80m (12'6")
 Bathroom 1.90m (6'3") x 1.90m (6'3")
 Bedroom 1 3.50m (11'6") x 3.50m (11'6")
 Bedroom 2 3.80m (12'6") x 2.50m (8'2")

Bedroom 3 2.80m (9'2") x 2.50m (8'2")
 Bedroom 4 3.40m (11'2") x 2.30m (7'7")
 Garden Room 3.80m (12'6") x 3.30m (10'10")
 Shower Room 1.30m (4'3") x 1.30m (4'3")

Gross internal floor area (m²): 96m²
 EPC Rating: D

