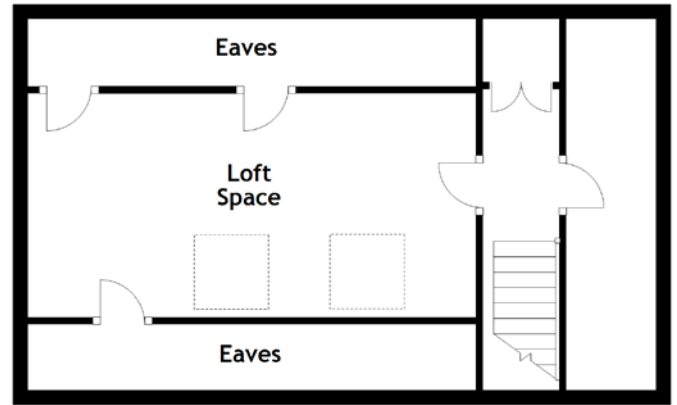
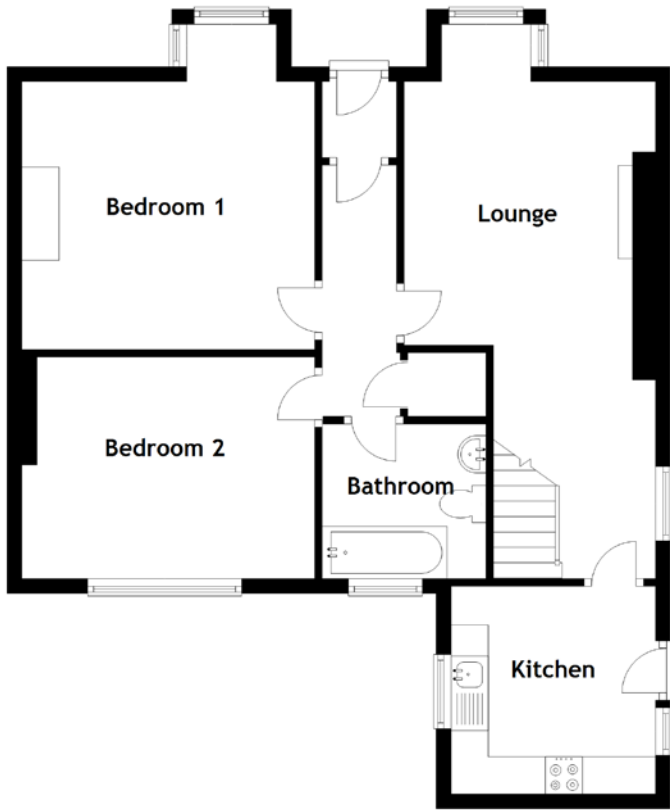


FLOOR PLAN, DIMENSIONS & MAP



Approximate Dimensions (Taken from the widest point)

Bedroom 2	3.94m (12'11") x 2.98m (9'9")
Bedroom 1	4.37m (14'4") x 3.94m (12'11")
Bathroom	2.20m (7'3") x 2.08m (6'10")
Lounge	6.73m (22'1") x 4.14m (13'7")
Kitchen	2.79m (9'2") x 2.75m (9')

Loft Space

6.02m (19'9") x 3.00m (9'10")

Gross internal floor area (m²): 77m²

EPC Rating: D

Extras (Included in the sale): Carpets and floor coverings, light fixtures and fittings, curtains and blinds.

