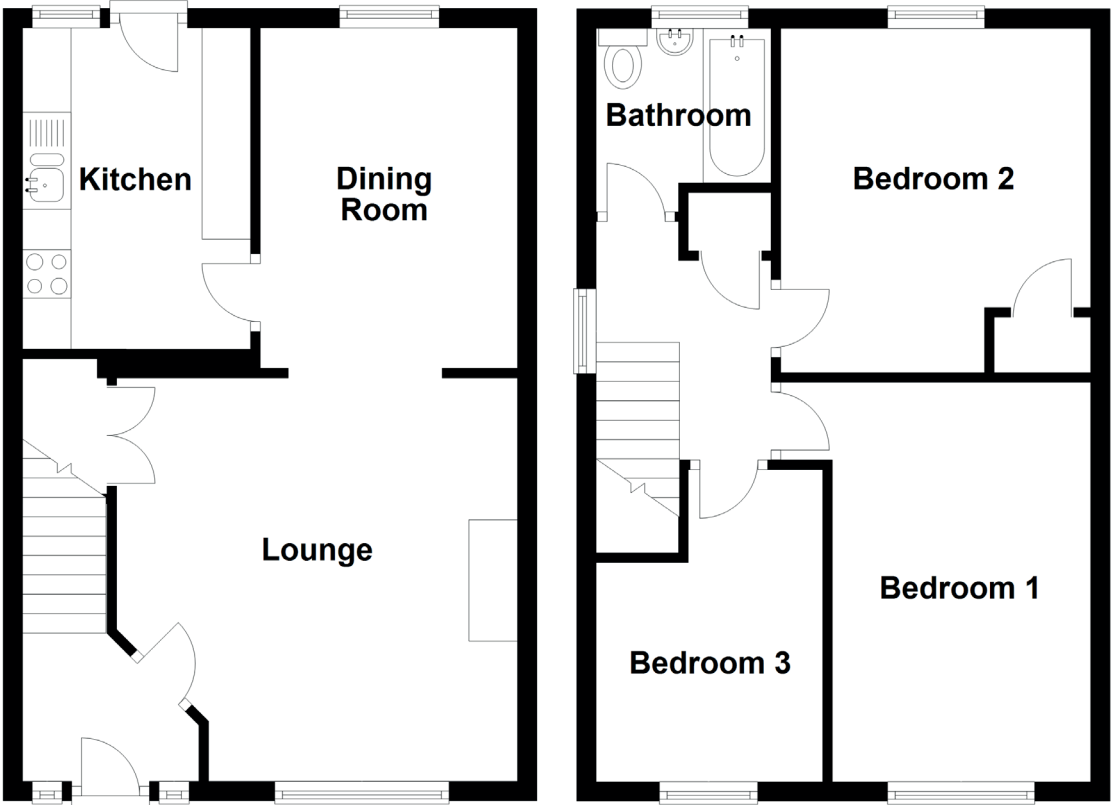


61 Whitlees Court

ARDROSSAN, KA22 7PB



Approximate Dimensions (Taken from the widest point)

Lounge	4.16m (13'8") x 4.13m (13'7")
Dining Room	3.51m (11'6") x 2.65m (8'8")
Kitchen	3.38m (11'1") x 2.35m (7'9")
Bedroom 1	4.20m (13'9") x 3.07m (10'1")
Bedroom 2	3.55m (11'8") x 3.07m (10'1")
Bedroom 3	3.22m (10'7") x 2.34m (7'8")
Bathroom	1.80m (5'11") x 1.59m (5'3")

Gross internal floor area (m²): 79m² | EPC Rating: D

Extras (Included in the sale): Carpets and floor coverings, light fixtures and fittings, curtains and blinds.