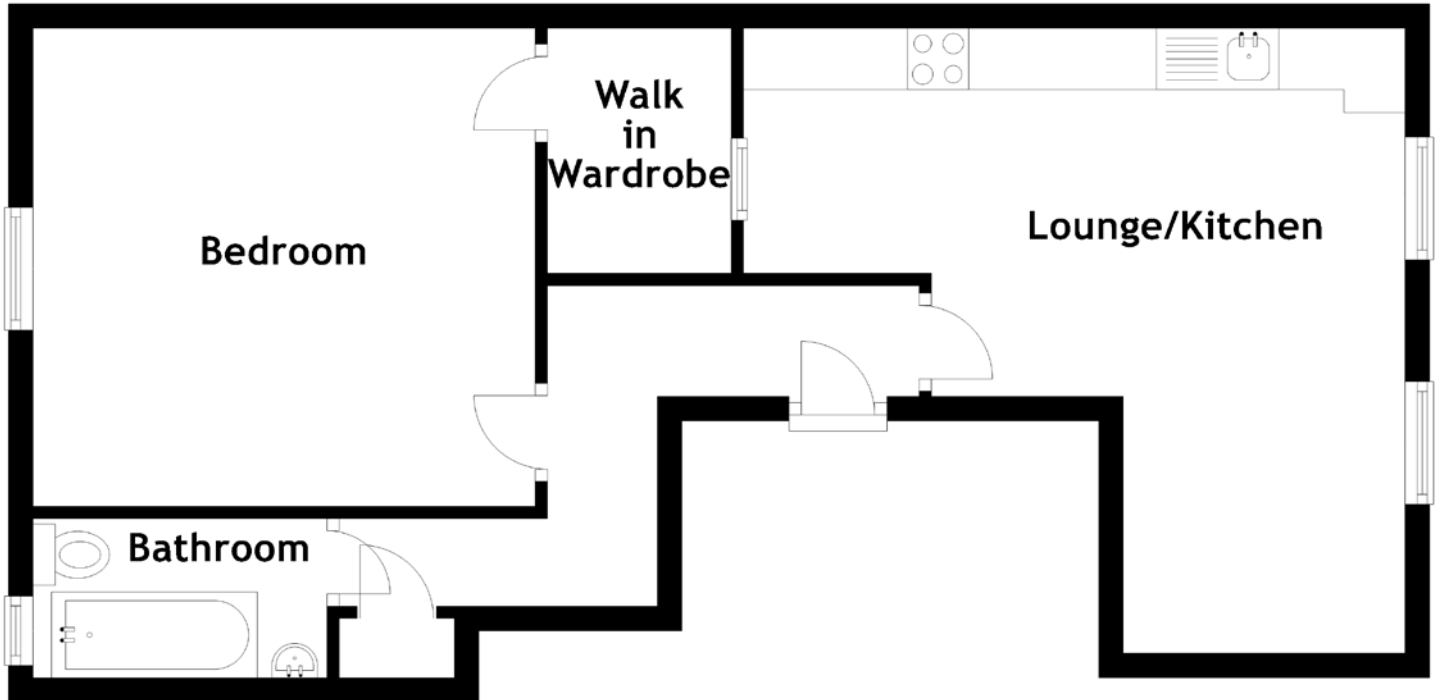


FLOOR PLAN, DIMENSIONS & MAP



Approximate Dimensions
(Taken from the widest point)

Lounge/Kitchen 5.40m (17'9") x 5.10m (16'9")
Bedroom 4.10m (13'5") x 3.90m (12'10")

Walk in Wardrobe 2.00m (6'7") x 1.50m (4'11")
Bathroom 2.40m (7'10") x 1.30m (4'3")

Gross internal floor area (m²): 52m²
EPC Rating: D

