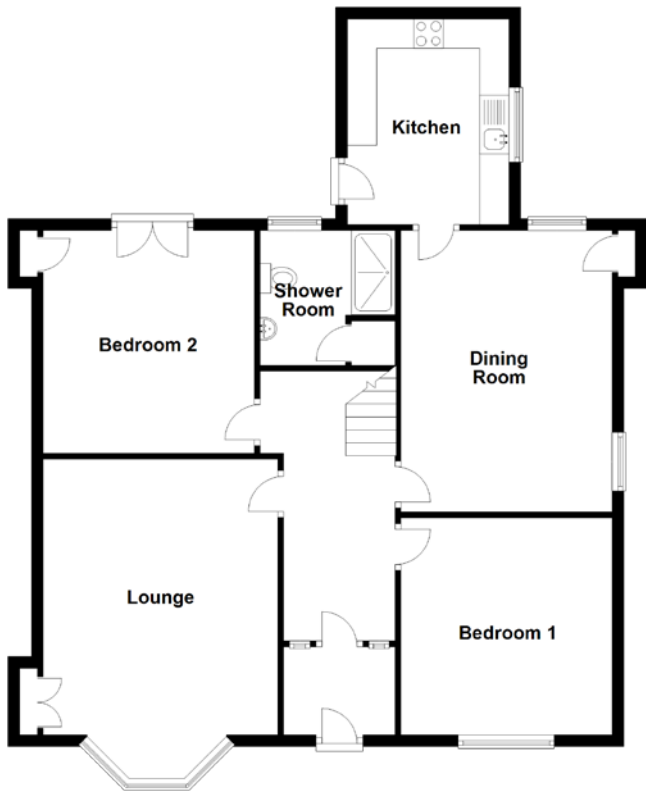


FLOOR PLAN, DIMENSIONS & MAP



Approximate Dimensions
(Taken from the widest point)

Lounge	4.80m (15'9") x 4.00m (13'1")
Kitchen	3.50m (11'6") x 2.75m (9')
Dining Room	4.80m (15'9") x 3.60m (11'10")
Shower Room	2.30m (7'7") x 2.30m (7'7")
Bedroom 1	3.70m (12'2") x 3.60m (11'10")
Bedroom 2	3.80m (12'6") x 3.60m (11'10")

Bedroom 3	6.10m (20') x 3.60m (11'10")
Bedroom 4	6.20m (20'4") x 3.60m (11'10")
WC	2.30m (7'7") x 1.95m (6'5")

Gross internal floor area (m²): 139m²
EPC Rating: D

Extras (Included in the sale): Furniture will be available by separate negotiation.

