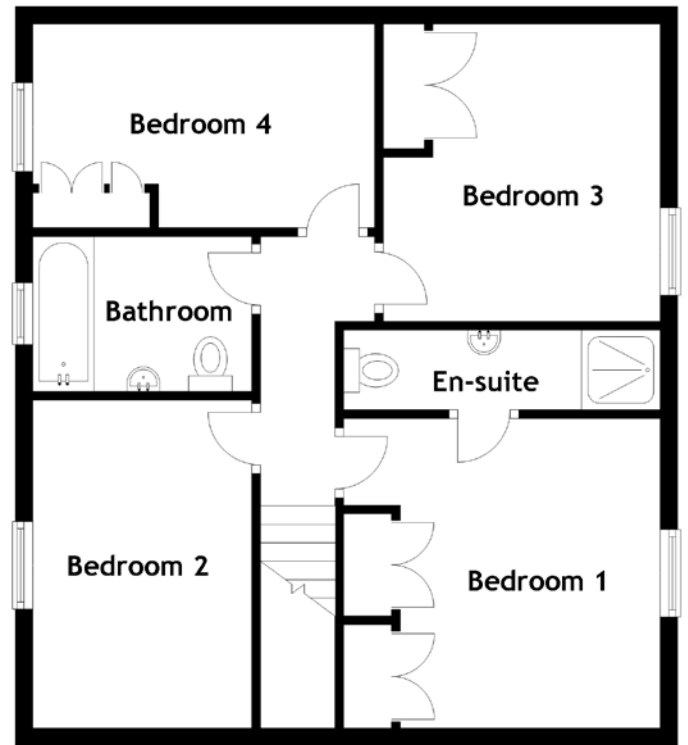
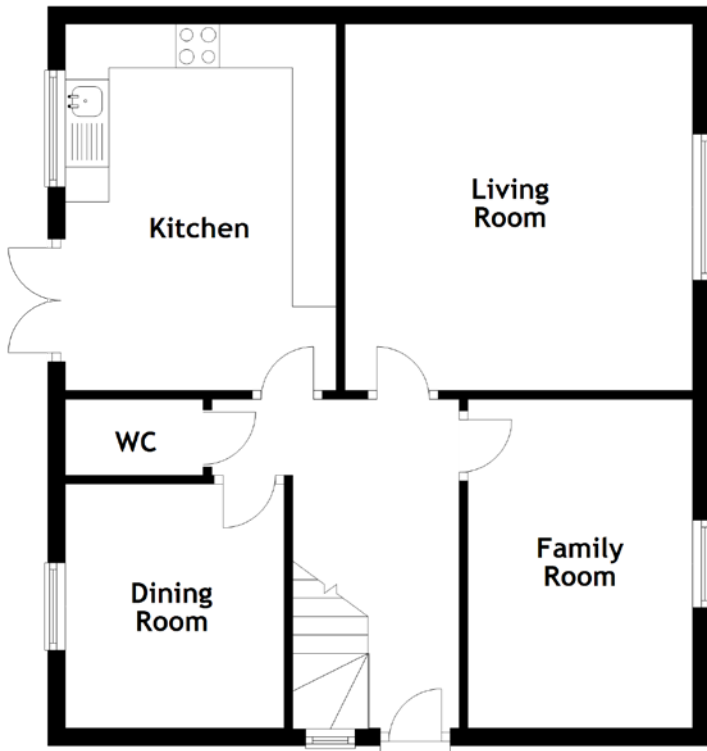


FLOOR PLAN, DIMENSIONS & MAP



Approximate Dimensions (Taken from the widest point)

Living Room	4.19m (13'9") x 3.98m (13'1")
Family Room	3.76m (12'4") x 2.57m (8'5")
Kitchen	4.19m (13'9") x 3.10m (10'2")
Dining Room	2.79m (9'2") x 2.50m (8'3")
WC	1.60m (5'3") x 0.90m (2'11")
Bathroom	2.50m (8'3") x 1.77m (5'10")

Bedroom 1	3.75m (12'4") x 3.59m (11'9")
En-suite	3.53m (11'7") x 0.91m (3")
Bedroom 2	3.75m (12'4") x 2.50m (8'3")
Bedroom 3	3.40m (11'2") x 3.17m (10'5")
Bedroom 4	3.91m (12'10") x 2.31m (7'7")

Gross internal floor area (m²): 123m²
EPC Rating: C

[VIRTUAL TOUR](#)

