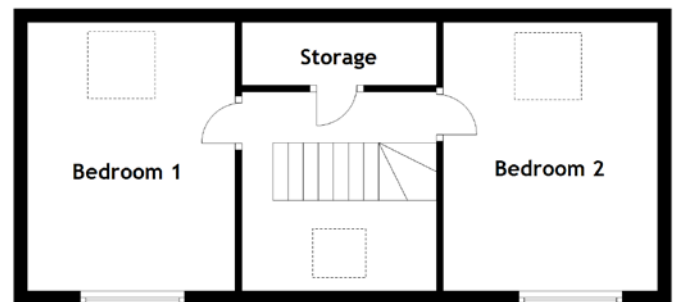
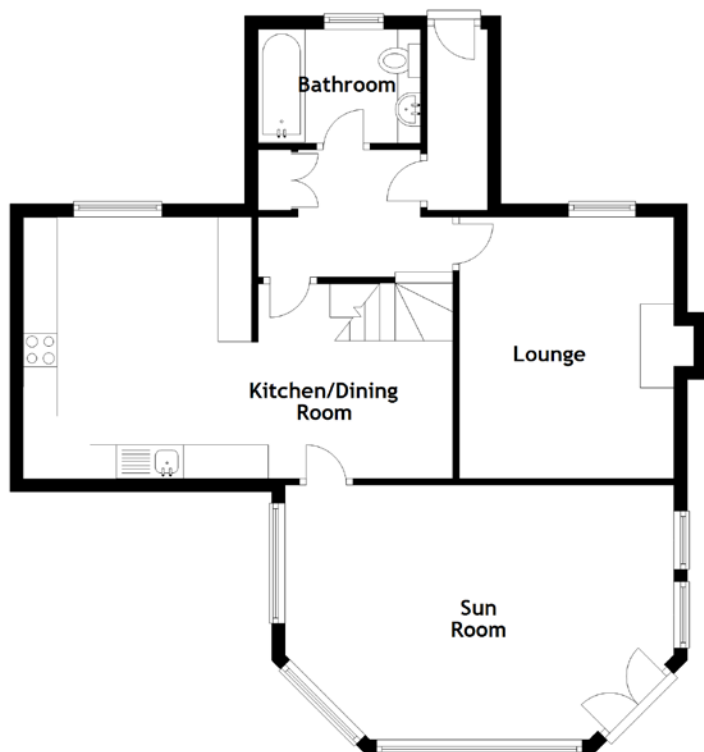


FLOOR PLAN, DIMENSIONS & MAP



Approximate Dimensions (Taken from the widest point)

Lounge	3.90m (12'10") x 3.20m (10'6")
Kitchen/Dining Room	6.40m (21') x 4.00m (13'1")
Sun Room	5.80m (19') x 3.80m (12'6")
Bathroom	2.20m (7'3") x 1.70m (5'7")
Bedroom 1	4.00m (13'1") x 3.10m (10'2")

Bedroom 2

4.00m (13'1") x 3.10m (10'2")

Gross internal floor area (m2): 96m²
EPC Rating: D

Extras (Included in the sale): All fitted floor coverings, blinds, curtains, and light fittings.

