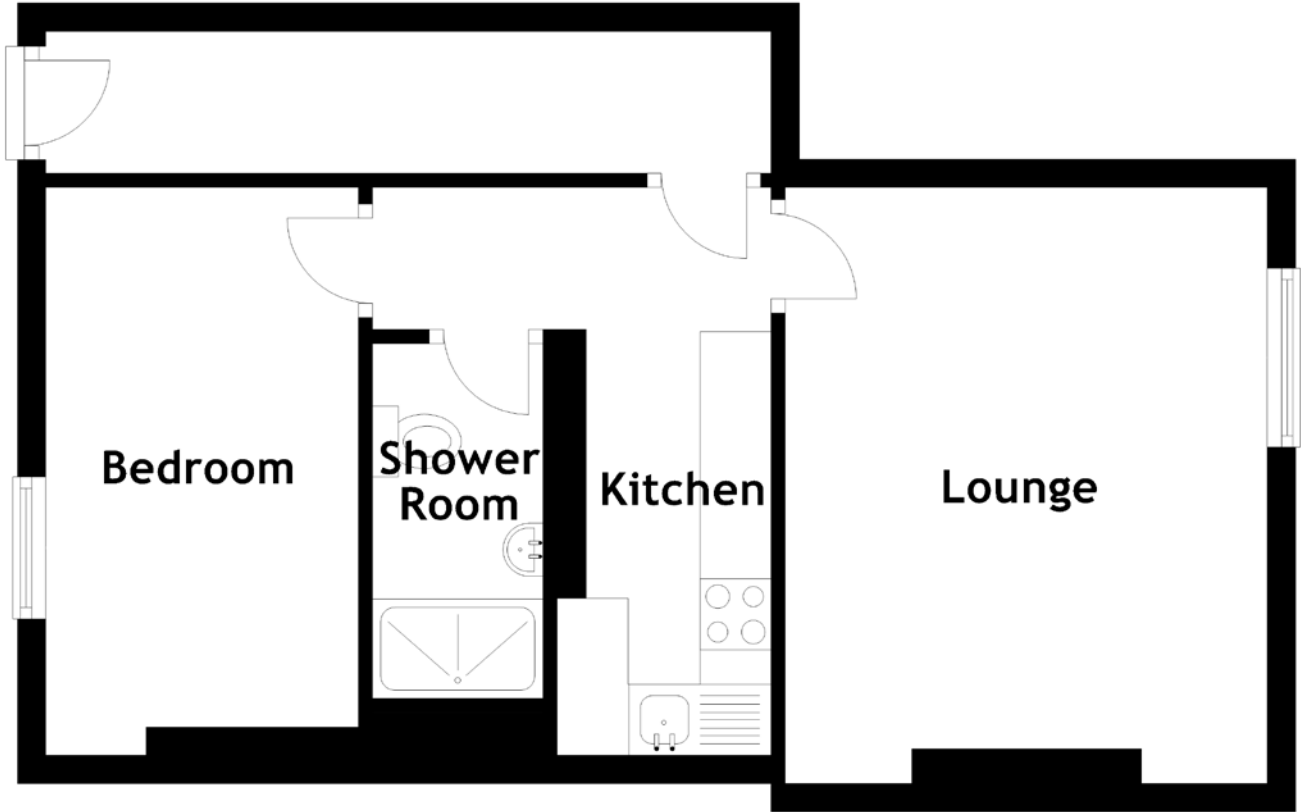


FLOOR PLAN, DIMENSIONS & MAP



Approximate Dimensions
(Taken from the widest point)

Shower Room
Bedroom

2.50m (8'2") x 1.20m (3'11")
4.00m (13'1") x 2.20m (7'3")

Lounge
Kitchen

4.20m (13'9") x 3.80m (12'6")
3.00m (9'10") x 1.50m (4'11")

Gross internal floor area (m²): 36m²
EPC Rating: D

