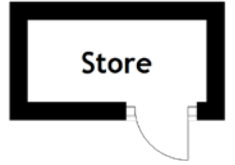
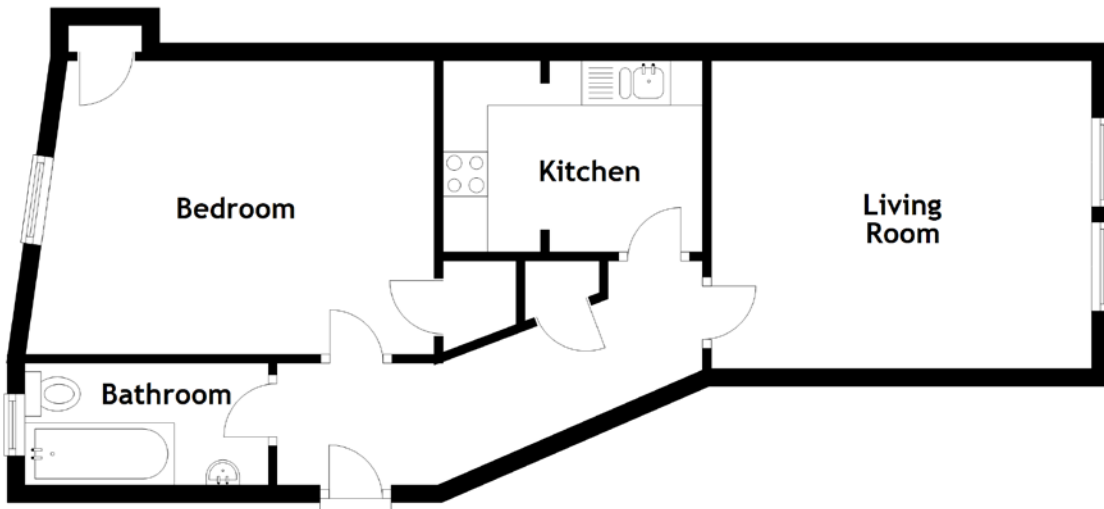


FLOOR PLAN, DIMENSIONS & MAP



Approximate Dimensions (Taken from the widest point)

Living Room 4.28m (14'1") x 3.46m (11'4")
Kitchen 2.92m (9'7") x 2.15m (7'1")
Bedroom 4.60m (15'1") x 3.30m (10'10")

Bathroom
Store

2.74m (9') x 1.37m (4'6")
2.02m (6'8") x 0.93m (3'1")

Gross internal floor area (m²): 51m²
EPC Rating: C

VIRTUAL TOUR

