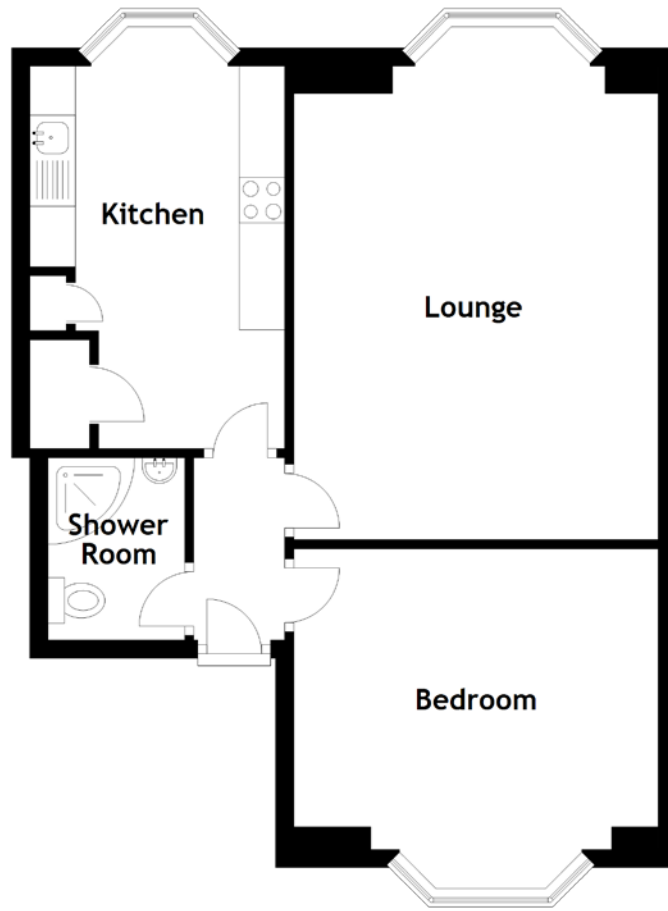


FLOOR PLAN, DIMENSIONS & MAP



Approximate Dimensions
(Taken from the widest point)

Lounge 5.20m (17'1") x 4.00m (13'1")
Kitchen 4.20m (13'9") x 2.80m (9'2")

Bedroom
Shower Room

4.00m (13'1") x 3.30m (10'10")
2.00m (6'7") x 1.50m (4'11")

Gross internal floor area (m²): 49m²
EPC Rating: E

