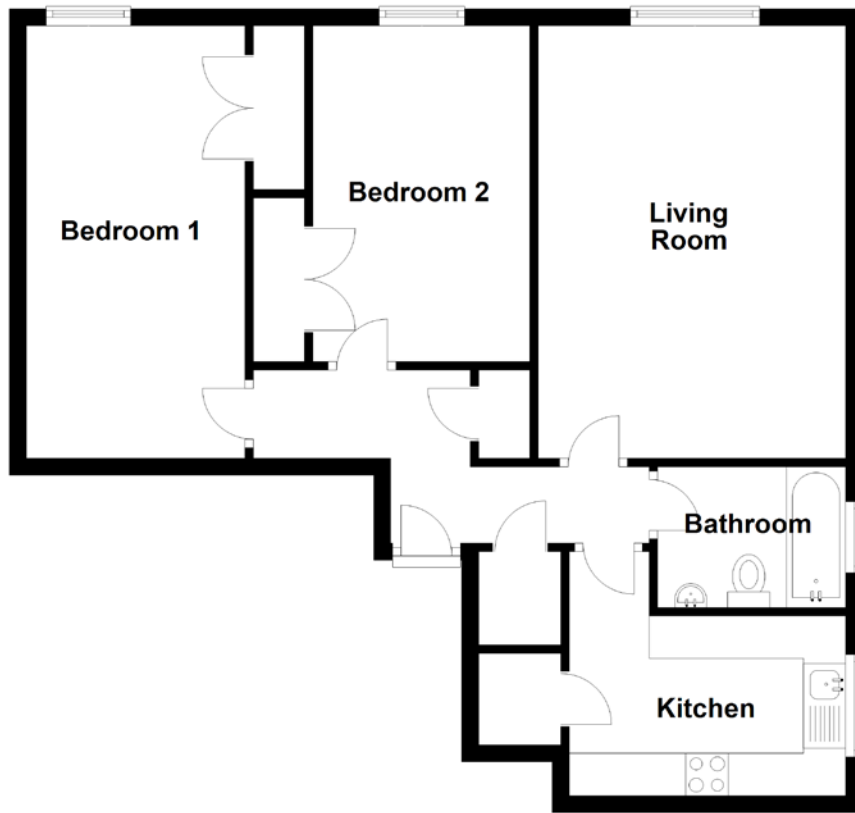


# FLOOR PLAN, DIMENSIONS & MAP



Approximate Dimensions (Taken from the widest point)

Living Room 5.10m (16'9") x 3.63m (11'11")  
 Kitchen 3.11m (10'2") x 2.88m (9'5")  
 Bedroom 1 5.01m (16'5") x 2.58m (8'6")

Bedroom 2 3.96m (13') x 2.56m (8'5")  
 Bathroom 2.22m (7'3") x 1.66m (5'5")

Gross internal floor area (m<sup>2</sup>): 68m<sup>2</sup>  
 EPC Rating: D

