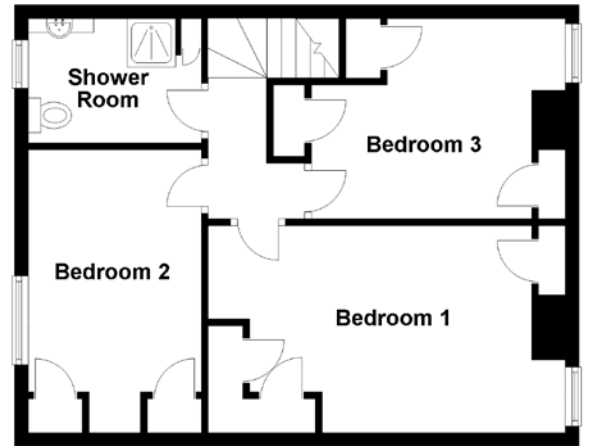
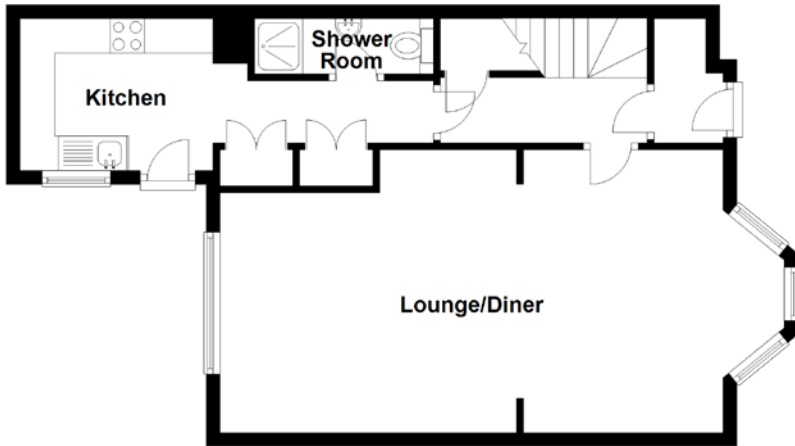


FLOOR PLAN, DIMENSIONS & MAP



Approximate Dimensions (Taken from the widest point)

Lounge/Diner	8.20m (26'11") x 4.10m (13'5")
Kitchen	3.40m (11'2") x 2.20m (7'3")
Shower Room	2.60m (8'6") x 0.80m (2'7")
Bedroom 1	4.70m (15'5") x 3.00m (9'10")

Bedroom 2	4.10m (13'5") x 2.50m (8'2")
Bedroom 3	2.90m (9'6") x 1.10m (3'7")
Shower Room	2.51m (8'3") max x 1.80m (5'11")

Gross internal floor area (m²): 99m²
EPC Rating: D

