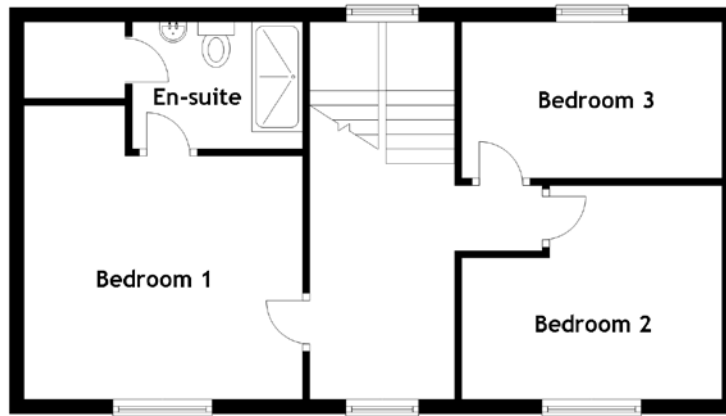
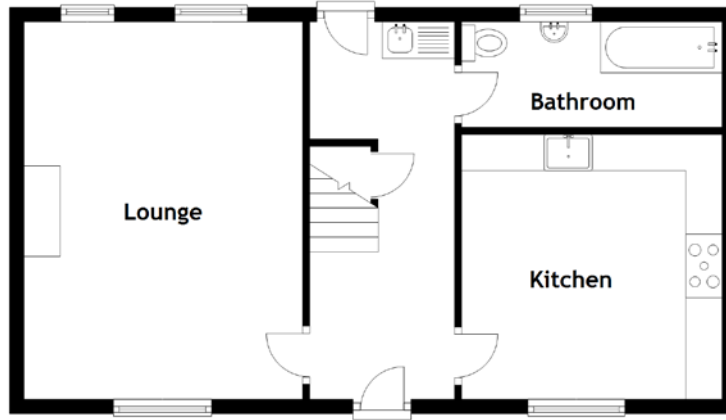


FLOOR PLAN, DIMENSIONS & MAP



Approximate Dimensions
(Taken from the widest point)

Lounge	5.20m (17'1") x 3.85m (12'8")
Kitchen	3.65m (12') x 3.60m (11'10")
Bathroom	3.60m (11'10") x 1.40m (4'7")
Bedroom 1	4.05m (13'3") x 3.85m (12'8")
En-suite	2.35m (7'9") x 1.75m (5'9")

Bedroom 2	3.60m (11'10") x 2.95m (9'8")
Bedroom 3	3.60m (11'10") x 2.30m (7'7")

Gross internal floor area (m²): 100m²
EPC Rating: D

Extras (Included in the sale): Floor coverings, light fittings, blinds and window dressings.

