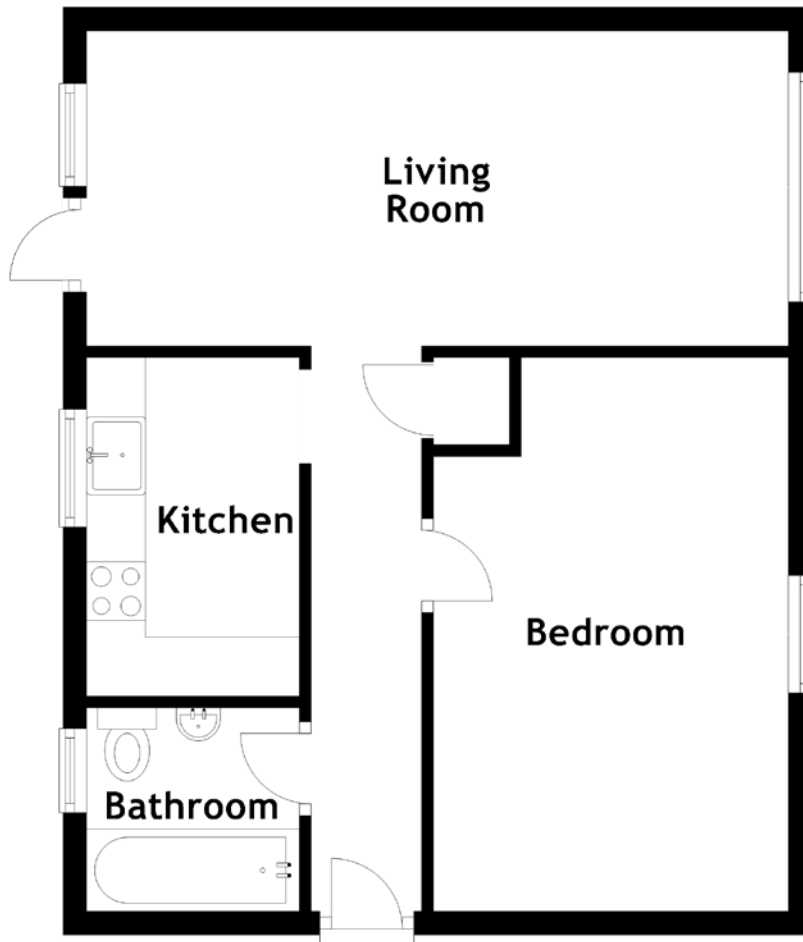


# FLOOR PLAN, DIMENSIONS & MAP



Approximate Dimensions  
(Taken from the widest point)

Living Room 5.97m (19'7") x 2.68m (8'10")  
Kitchen 3.17m (10'5") x 1.81m (5'11")

Bedroom 4.71m (15'5") x 3.02m (9'11")  
Bathroom 1.81m (5'11") x 1.73m (5'8")

Gross internal floor area (m<sup>2</sup>): 47m<sup>2</sup>  
EPC Rating: D

