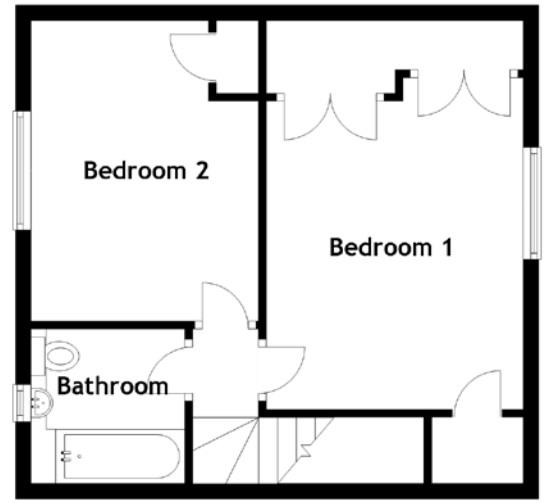
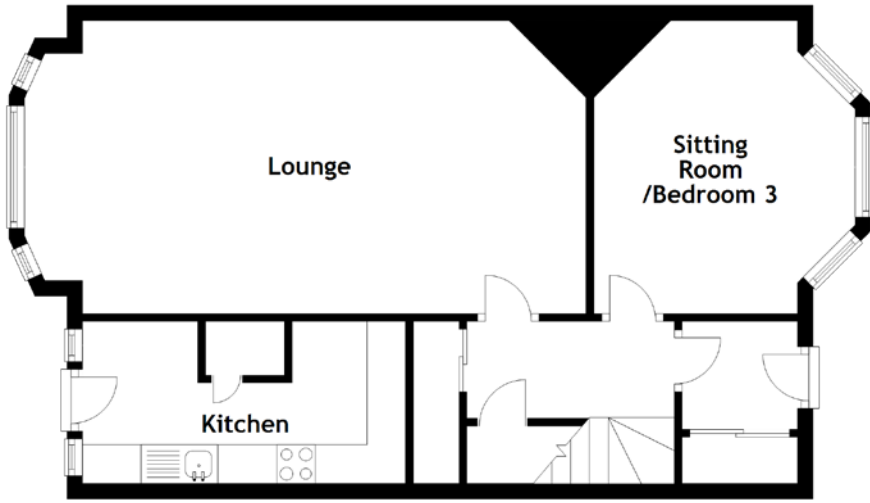


FLOOR PLAN, DIMENSIONS & MAP



Approximate Dimensions
(Taken from the widest point)

Lounge 7.30m (24') x 3.80m (12'6")
 Sitting Room/Bedroom 3 3.80m (12'6") x 3.40m (11'2")
 Kitchen 4.20m (13'9") x 2.10m (6'11")

Bathroom 2.00m (6'7") x 2.00m (6'7")
 Bedroom 1 4.30m (14'1") x 3.20m (10'6")
 Bedroom 2 3.90m (12'9") x 2.96m (9'8")

Gross internal floor area (m²): 94m²
 EPC Rating: E

