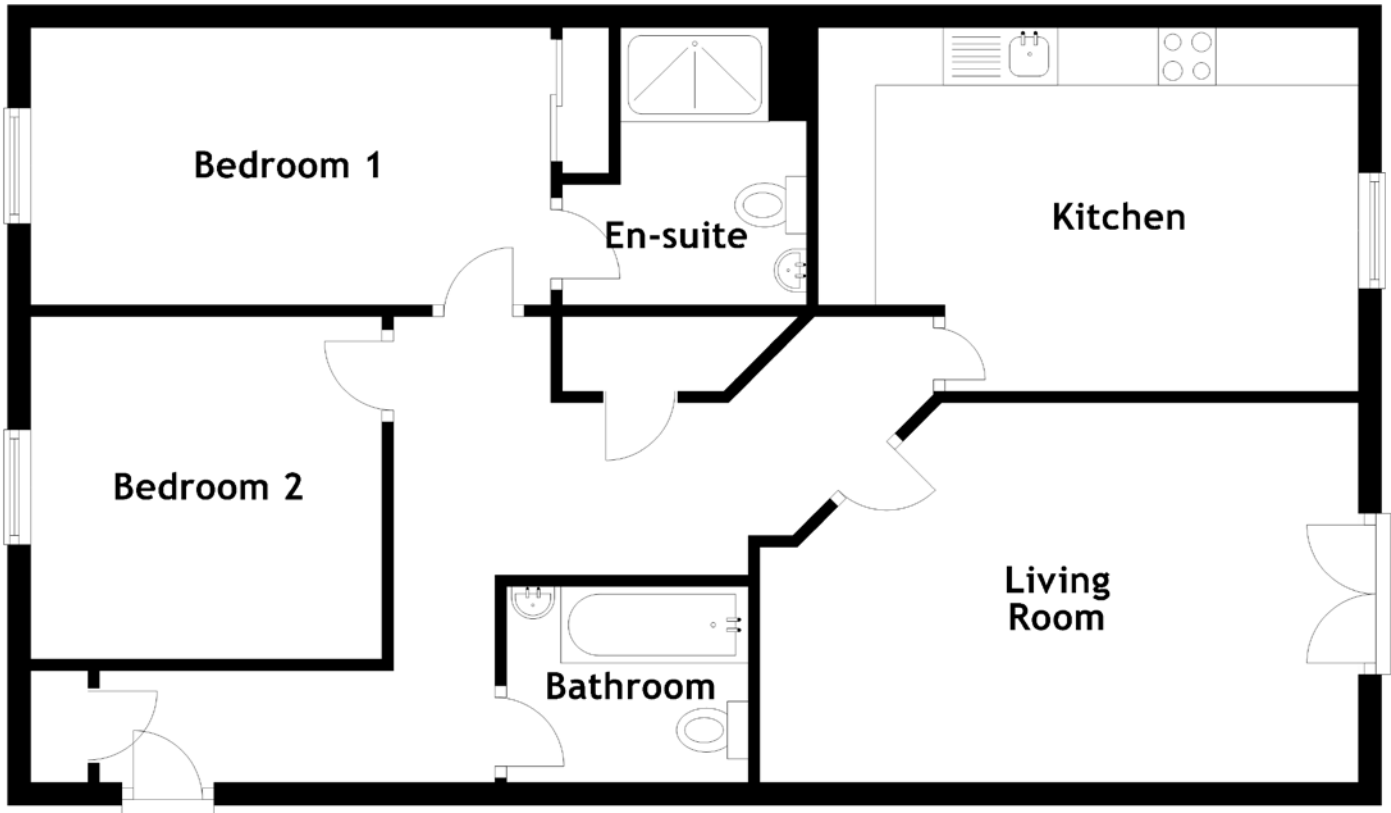


FLOOR PLAN, DIMENSIONS & MAP



Approximate Dimensions
(Taken from the widest point)

Living Room 5.19m (17') x 3.30m (10'10")
 Kitchen 4.71m (15'5") x 3.16m (10'4")
 Bedroom 1 4.53m (14'10") x 2.41m (7'11")

En-suite 2.41m (7'11") x 2.33m (7'8")
 Bedroom 2 3.06m (10') x 2.98m (9'9")
 Bathroom 2.10m (6'11") x 1.70m (5'7")

Gross internal floor area (m²): 80m²
 EPC Rating: B

