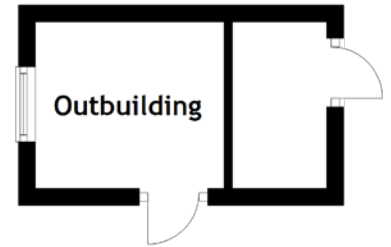
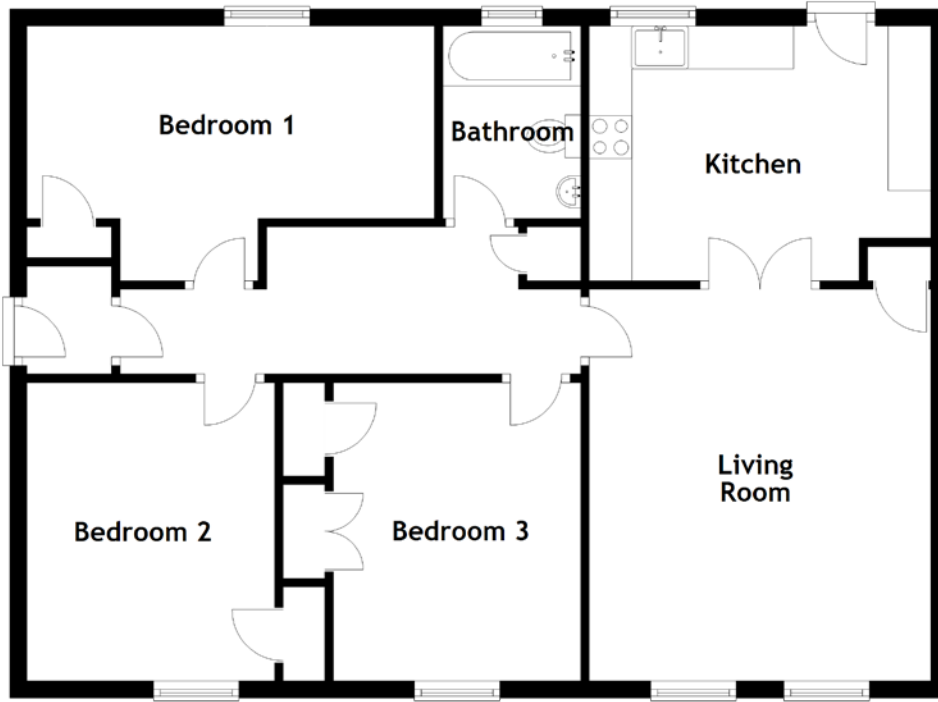


FLOOR PLAN, DIMENSIONS & MAP



Approximate Dimensions
(Taken from the widest point)

Living Room 4.58m (15') x 4.00m (13'1")
 Kitchen 4.00m (13'1") x 2.98m (9'9")
 Bedroom 1 4.75m (15'7") x 2.98m (9'9")
 Bedroom 2 3.49m (11'5") x 2.90m (9'6")

Bedroom 3
 Bathroom

3.49m (11'5") x 2.89m (9'6")
 2.25m (7'5") x 1.61m (5'3")

Gross internal floor area (m²): 80m²
 EPC Rating: C

Extras: Fixtures and fittings.

