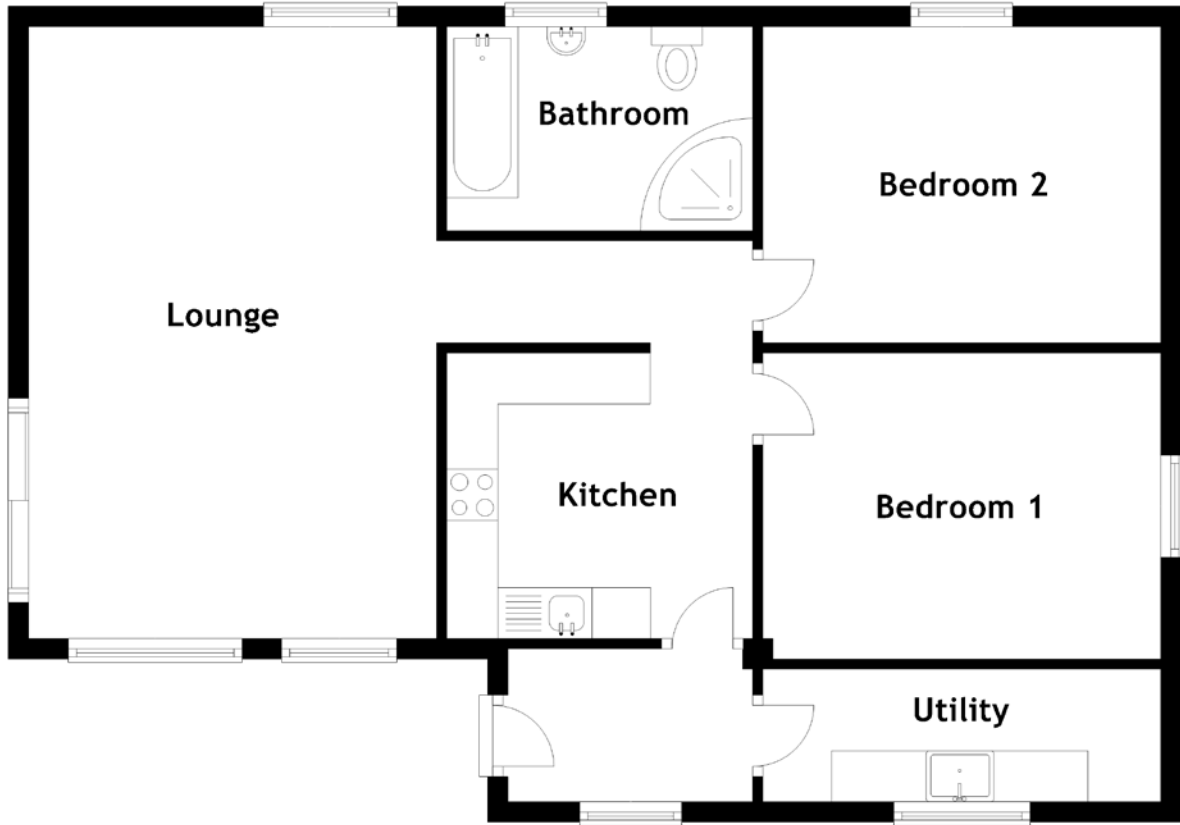


FLOOR PLAN, DIMENSIONS & MAP



Approximate Dimensions (Taken from the widest point)

Lounge 6.00m (19'8") x 4.00m (13'1")
 Kitchen 3.00m (9'10") x 2.70m (8'10")

Utility

Bedroom 1
 Bedroom 2
 Bathroom

3.90m (12'10") x 1.30m (4'3")
 3.90m (12'10") x 3.00m (9'10")
 3.90m (12'10") x 3.10m (10'2")
 3.00m (9'10") x 2.00m (6'7")

