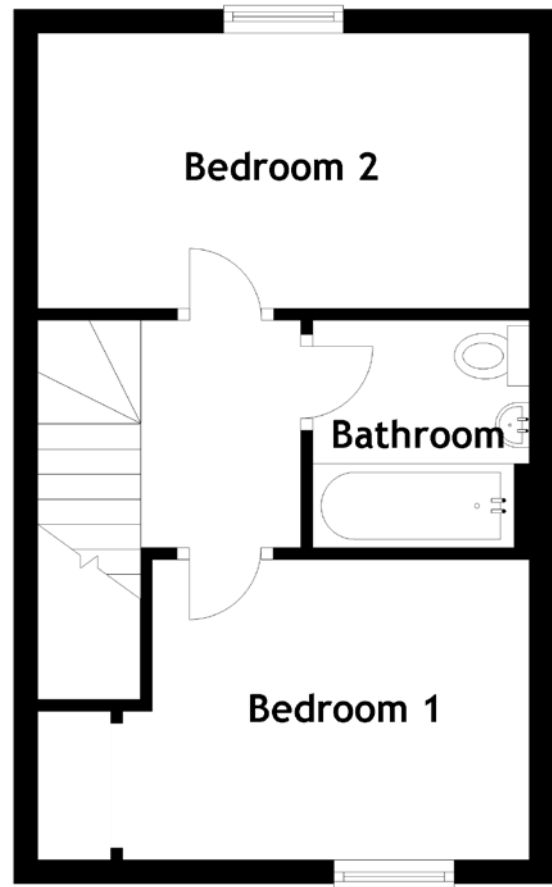
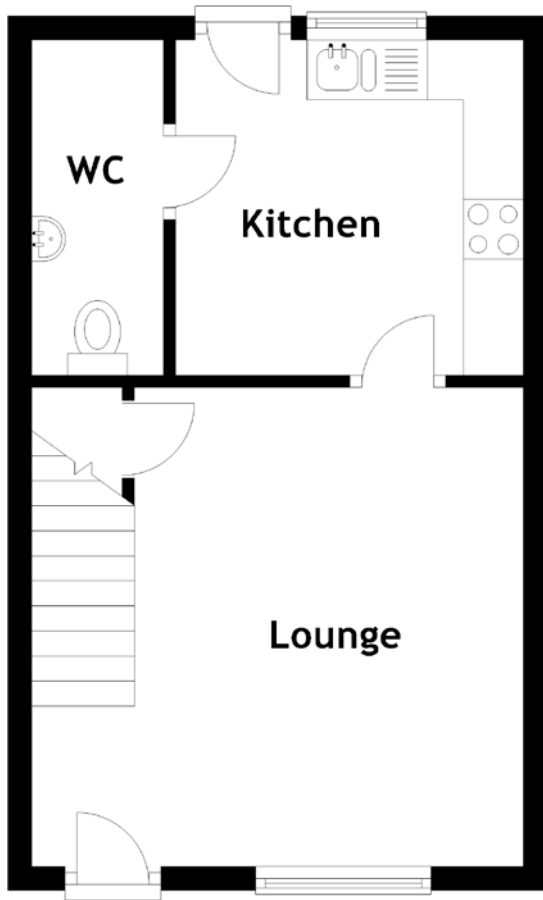


FLOOR PLAN, DIMENSIONS & MAP



Approximate Dimensions
(Taken from the widest point)

Lounge	4.10m (13'5") x 4.00m (13'1")
Kitchen	2.90m (9'6") x 2.80m (9'2")
WC	2.80m (9'2") x 1.10m (3'7")

Bedroom 1	3.30m (10'10") x 2.60m (8'6")
Bedroom 2	4.10m (13'5") x 2.30m (7'6")
Bathroom	1.90m (6'3") x 1.80m (5'11")

Gross internal floor area (m²): 56m²
EPC Rating: B

