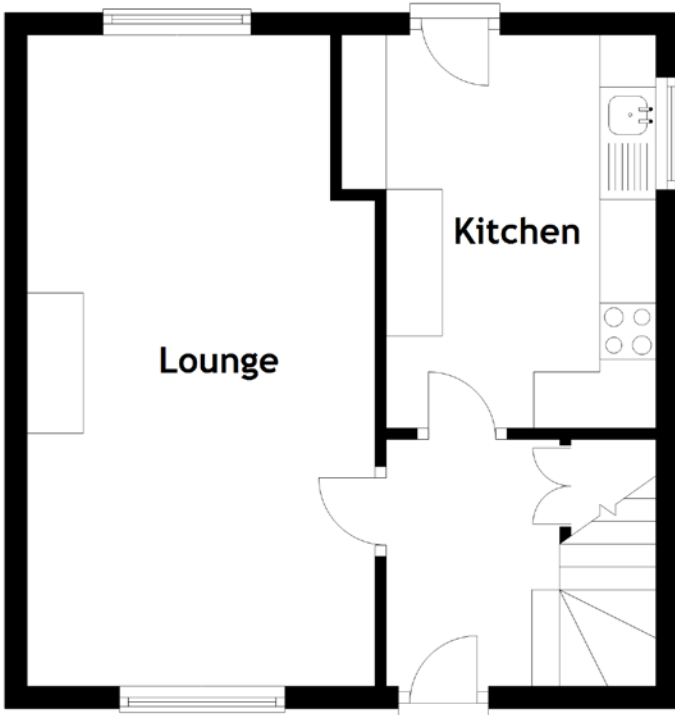


FLOOR PLAN, DIMENSIONS & MAP



Approximate Dimensions
(Taken from the widest point)

Lounge 5.80m (19') x 3.10m (10'2")
Kitchen 3.50m (11'6") x 2.60m (8'7")

Bedroom 1 4.60m (15'1") x 2.80m (9'2")
Bedroom 2 3.60m (11'10") x 2.90m (9'6")
Shower Room 1.90m (6'3") x 1.60m (5'3")

Gross internal floor area (m²): 66m² | EPC Rating: C

