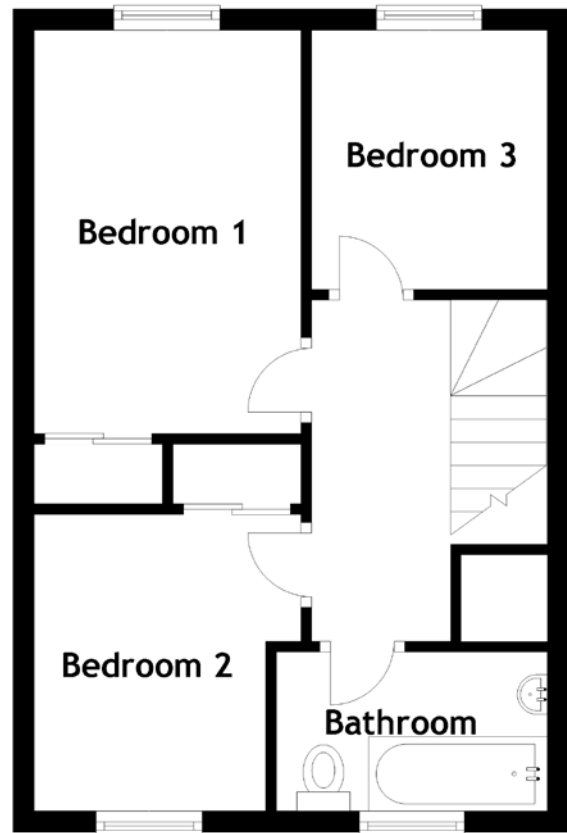
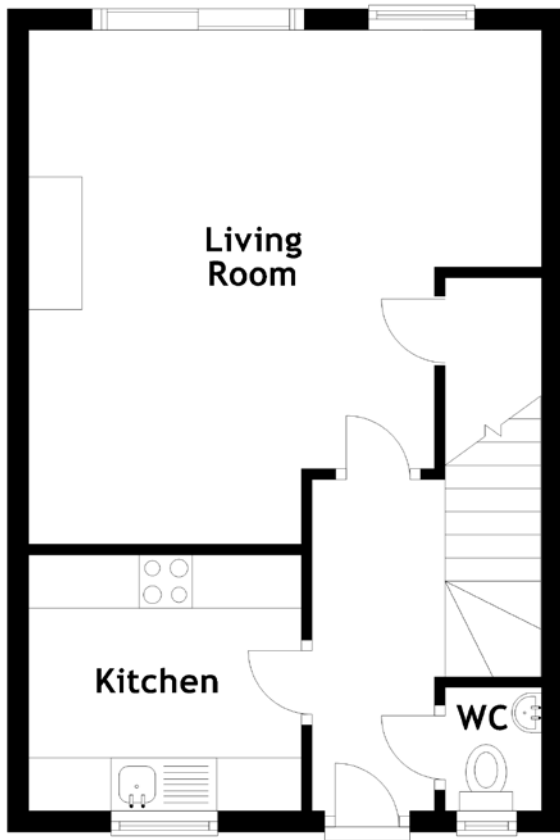


# FLOOR PLAN, DIMENSIONS & MAP



Approximate Dimensions (Taken from the widest point)

Living Room	4.84m (15'11") x 3.82m (12'6")
Kitchen	2.57m (8'5") x 2.41m (7'11")
WC	1.16m (3'10") x 1.02m (3'4")
Bedroom 1	3.80m (12'5") x 2.51m (8'3")

Bedroom 2	2.79m (9'2") x 2.00m (6'7")
Bedroom 3	2.44m (8') x 2.26m (7'5")
Bathroom	2.55m (8'4") x 1.50m (4'11")

Gross internal floor area (m<sup>2</sup>): 71m<sup>2</sup>  
EPC Rating: D

