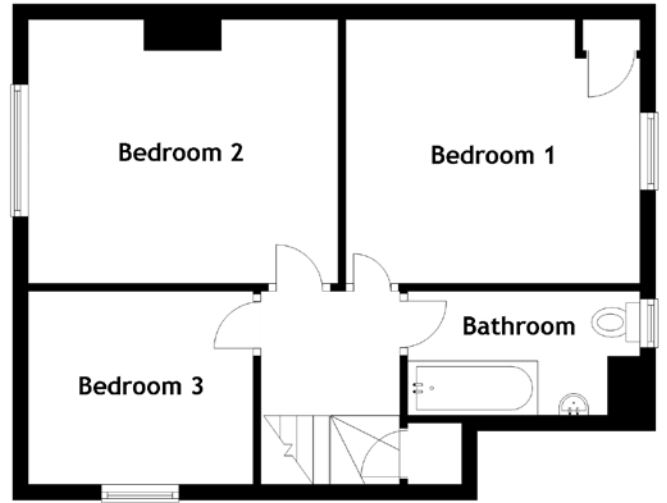


FLOOR PLAN, DIMENSIONS & MAP



Approximate Dimensions (Taken from the widest point)

Lounge	4.90m (16'1") x 3.90m (12'10")
Kitchen/Diner	6.00m (19'8") x 3.90m (12'10")
WC	2.70m (8'10") x 0.90m (2'11")
Bedroom 1	3.80m (12'6") x 3.40m (11'2")

Bedroom 2	3.70m (12'2") x 3.40m (11'2")
Bedroom 3	2.90m (9'6") x 2.20m (7'3")
Bathroom	3.00m (9'10") x 1.60m (5'3")

Gross internal floor area (m²): 94m²
EPC Rating: D

