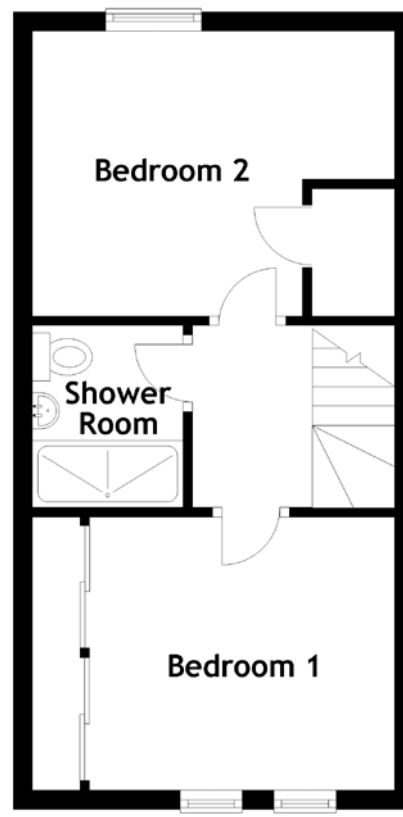
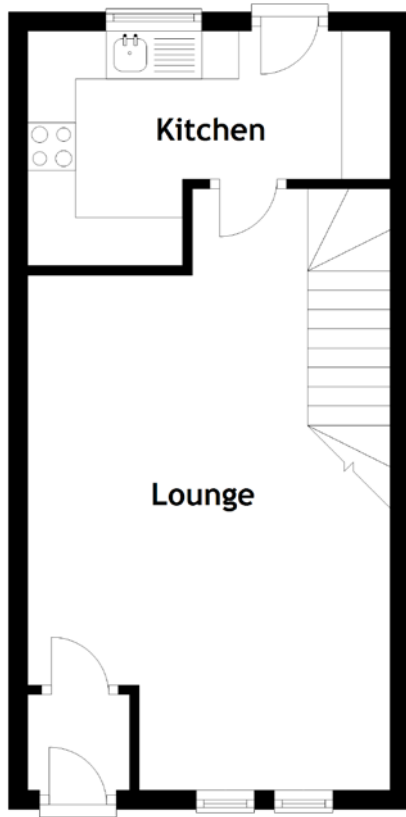


FLOOR PLAN, DIMENSIONS & MAP



Approximate Dimensions (Taken from the widest point)

Lounge 6.28m (20'7") x 3.78m (12'5")
 Kitchen 3.78m (12'5") x 3.35m (11')
 Bedroom 1 3.78m (12'5") x 2.58m (8'6")

Bedroom 2 3.78m (12'5") x 2.98m (9'9")
 Shower Room 1.90m (6'3") x 1.57m (5'2")

Gross internal floor area (m²): 62m²
 EPC Rating: C

