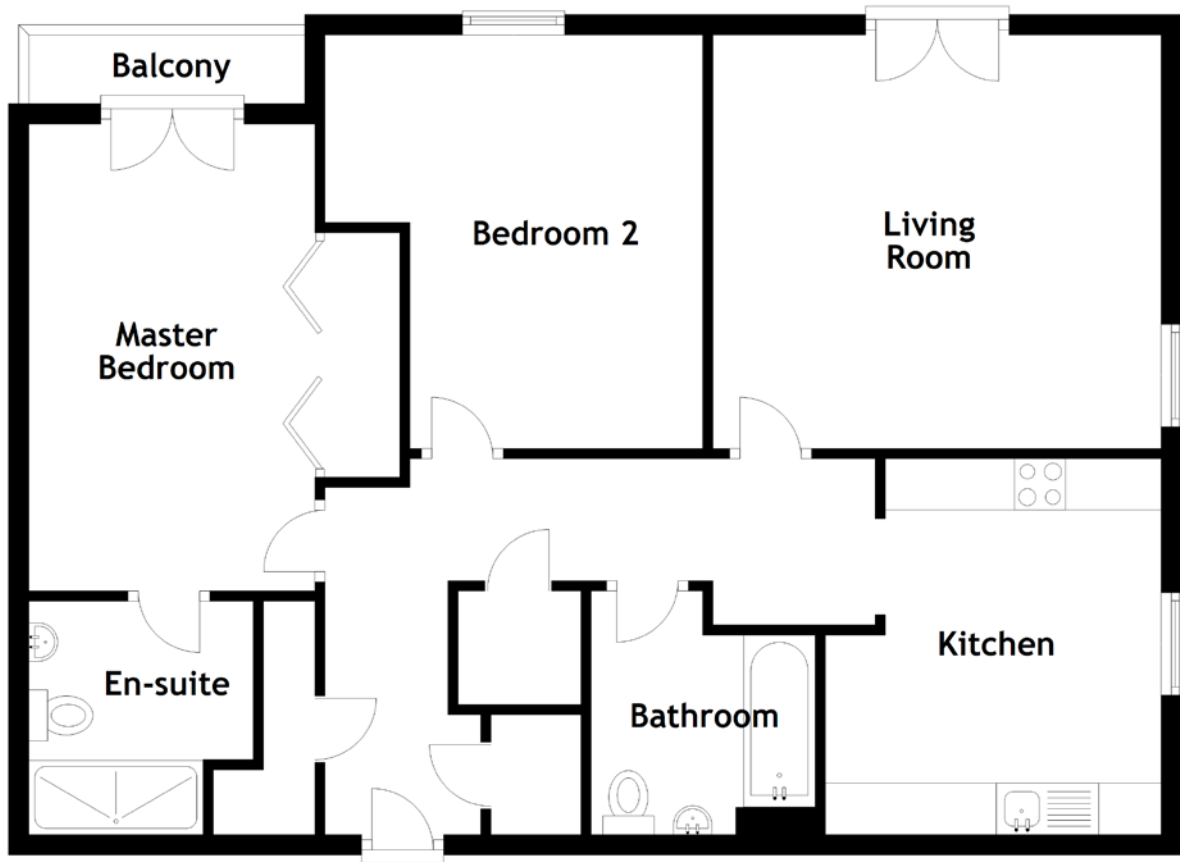


# FLOOR PLAN, DIMENSIONS & MAP



Approximate Dimensions (Taken from the widest point)

Living Room 4.38m (14'4") x 4.04m (13'3")  
 Balcony 2.79m (9'2") x 0.77m (2'6")  
 Kitchen 3.67m (12') x 3.28m (10'9")  
 Bathroom 2.38m (7'10") x 2.19m (7'2")

Master Bedroom 4.56m (15') x 2.79m (9'2")  
 En-suite 2.29m (7'6") x 2.19m (7'2")  
 Bedroom 2 4.04m (13'3") x 3.69m (12'1")  
 Gross internal floor area (m<sup>2</sup>): 86m<sup>2</sup>  
 EPC Rating: B

