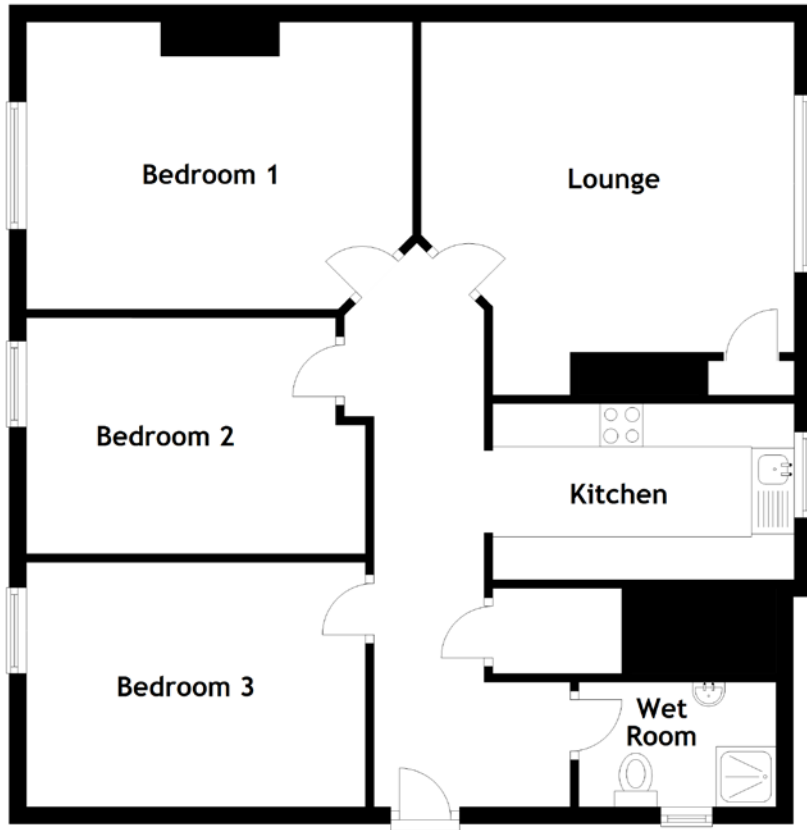


FLOOR PLAN, DIMENSIONS & MAP



Approximate Dimensions
(Taken from the widest point)

Lounge	4.35m (14'3") x 4.35m (14'3")
Kitchen	3.50m (11'6") x 2.05m (6'9")
Bedroom 1	4.50m (14'9") x 3.35m (11')
Bedroom 2	3.95m (13') max x 2.75m (9')

Bedroom 3	3.95m (13') x 2.85m (9'4")
Wet Room	2.30m (7'6") x 1.45m (4'9")

Gross internal floor area (m²): 78m² | EPC Rating: C

Extras: Free-standing appliances may be available by separate negotiation.

